

# Test Report

Report No.: U03601201022805E

Query Password: QW8897

Date: Nov. 12, 2020

Page 1 of 16

**Applicant:** SHENZHEN VANSU TECHNOLOGY CO.,LTD**Contact information:** ROOM 1008, 10TH FLOOR, WANGCHENG BUILDING, LONGGUAN EAST ROAD,  
LONGHUA STREET, LONGHUA DISTRICT, SHENZHEN CHINA**The following sample(s) was (were) submitted and identified by client as:**

Sample Name : ozone purifier  
Model No. : WT1200 WT1200L WT1200H  
Sample Received Date : Oct. 22, 2020  
Testing Period : From Oct. 22, 2020 to Nov. 9, 2020  
Test Request : Please refer to next page(s).  
Test Result(s) : Please refer to next page(s).

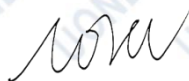
Signed for and on behalf of Shen Zhen UONE Test Co., LTD.

Prepared by



Marcia Deng

Checked by



Nora Deng

Approved by



Levent Liang

This report is valid only with a valid digital signature. The digital signature may be available only under the Adobe software above version 7.0.

# Test Report

Report No.: U03601201022805E

Query Password: QW8897

Date: Nov. 12, 2020

Page 2 of 16

---

Summary of Test Results (Tested parts are required partially by client):

**TEST REQUEST****CONCLUSION**

RoHS Directive 2011/65/EU and its subsequent amendments &amp; Directive (EU) 2015/863

To determine Lead (Pb), Cadmium(Cd), Mercury(Hg), Hexavalent Chromium(Cr(VI)),

(1) Polybrominated Biphenyls (PBBs) and Polybrominated DiphenylEthers (PBDEs) content by screening test and chemical test

**PASS**

(2) To determine Phthalates (DBP, BBP, DEHP, DIBP) content by chemical test

**PASS**

---

This report is valid only with a valid digital signature. The digital signature may be available only under the Adobe software above version 7.0.

## Test Report

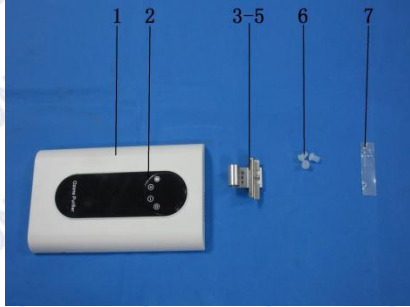
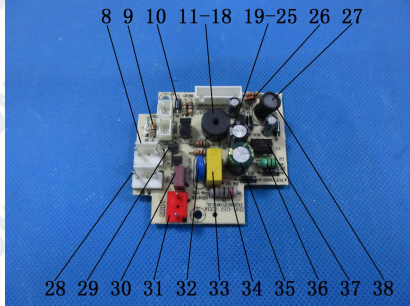
Report No.: U03601201022805E

Query Password: QW8897

Date: Nov. 12, 2020

Page 3 of 16

### Test Material List

Material No.	Description (Location)	Photo(s) of tested materials
1	White plastic (case)	
2	Black plastic (display)	
3	Silver metal (fixed piece)	
4	Silver metal (connector)	
5	Silver metal (radiator fin)	
6	White rubber (footpad)	
7	Cellophane tape to stick	
8	White plastic (terminal case)	
9	Yellow body with color print (resistor, PCB)	
10	Black body (Diode, PCB)	
11	Black plastic (case, buzzer)	
12	Gold metal (patch, buzzer)	
13	Black magnetic ring (buzzer)	
14	Silver metal (shaft, buzzer)	
15	Copper metal (coil, buzzer)	
16	Silver metal (pin (buzzer)	
17	Silver metal (solder, buzzer)	
18	Green PCB (Buzzer)	
19	Black plastic with white print (capacitor, PCB)	
20	Silver metal case (Capacitor, PCB)	
21	Black rubber base (Capacitor, PCB)	
22	Silver metal pin (Capacitor, PCB)	
23	Silver foil (Capacitor, PCB)	
24	Dark silver foil (Capacitor, PCB)	
25	Yellow paper with liquid (capacitor, PCB)	
26	Brown red body (Resistor, PCB)	
27	Black body (inductor, PCB)	

This report is valid only with a valid digital signature. The digital signature may be available only under the Adobe software above version 7.0.

## Test Report

Report No.: U03601201022805E

Query Password: QW8897

Date: Nov. 12, 2020

Page 4 of 16

Material No.	Description (Location)	Photo(s) of tested materials	
28	Silver metal (pin)		
29	Black body (triode, PCB)		
30	Red body (fuse, PCB)		
31	Red plastic (terminal case)		
32	Blue body (Capacitor, PCB)		
33	Yellow body (Capacitor, PCB)		
34	Gray body with color print (resistor, PCB)		
35	Green plastic with gold print (capacitor, PCB)		
36	Black body (Diode, PCB)		
37	Black body (INTEGRATED Circuit, PCB)		
38	Black plastic (sheath)		
39	Black body (Emitter, PCB)		
40	Silver metal (spring)		
41	Black body (digital tube, PCB)		
42	Black body (INTEGRATED Circuit, PCB)		
43	Green PCB		
44	Silver metal (solder)		
45	The white paper		

This report is valid only with a valid digital signature. The digital signature may be available only under the Adobe software above version 7.0.

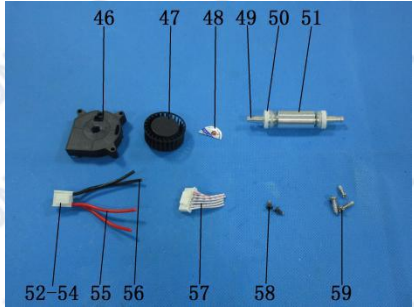
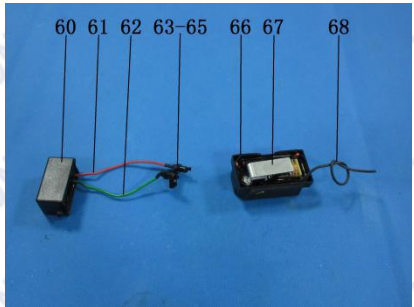
# Test Report

Report No.: U03601201022805E

Query Password: QW8897

Date: Nov. 12, 2020

Page 5 of 16

Material No.	Description (Location)	Photo(s) of tested materials	
46	Black plastic case		
47	Black plastic (fan blade)		
48	The silver label		
49	Silver metal shaft		
50	White ceramic		
51	Silver metal (rotor)		
52	White plastic (terminal case)		
53	Silver metal (pin)		
54	Silver metal (wire)		
55	Red plastic (cable)		
56	Black plastic (cable)		
57	Red and white plastic (cable)		
58	Metal (screw) with black coating		
59	Silver metal (screw)		
60	Black plastic case		
61	Red plastic (cable)		
62	Green plastic (cable)		
63	Black plastic (fixed frame)		
64	Black plastic (brush)		
65	Silver metal (wire)		
66	Black plastic case		
67	Silver metal (fixed piece)		
68	Black plastic (cable)		

This report is valid only with a valid digital signature. The digital signature may be available only under the Adobe software above version 7.0.

## Test Report

Report No.: U03601201022805E

Query Password: QW8897

Date: Nov. 12, 2020

Page 6 of 16

Material No.	Description (Location)	Photo(s) of tested materials
69	Silver metal (pin)	
70	Red plastic (terminal case)	
71	Blue plastic (cable)	
72	Silver metal (screw)	
73	Black plastic case	
74	Silver metal (plug)	
75	White inner plastic	
76	White plastic (plug)	
77	Copper metal (wire)	
78	White plastic (wire)	
79	White plastic (cable)	
80	White hose	
81	White plastic (joint)	
82	Gray solid	
83	Green plastic (casing)	

Remark: The test result(s) of Material No. 76 is(are) shown retest result, and the retest sample(s) was(were) provided by client on Nov. 6, 2020.

This report is valid only with a valid digital signature. The digital signature may be available only under the Adobe software above version 7.0.

# Test Report

Report No.: U03601201022805E

Query Password: QW8897

Date: Nov. 12, 2020

Page 7 of 16

## Test Result(s):

(1) Lead (Pb), Cadmium(Cd), Mercury(Hg), Hexavalent Chromium(Cr(VI)), Polybrominated Biphenyls (PBBs) and Polybrominated DiphenylEthers (PBDEs)

Test Method: IEC62321-3-1: 2013, IEC62321-4: 2013+A1:2017, IEC62321-5: 2013, IEC62321-6: 2015, IEC62321-7-1:2015, IEC 62321-7-2: 2017, analyzed by EDXRF & ICP-OES & GC-MS & UV-Vis.

No.	EDXRF Result <sup>(1)</sup>					Chemical Result <sup>(2)</sup> (mg/kg)	Remark <sup>(3)</sup>	Conclusion
	Pb	Cd	Hg	Cr	Br			
1	BL	BL	BL	BL	BL	—	—	PASS
2	BL	BL	BL	BL	BL	—	—	PASS
3	BL	BL	BL	BL	BL	—	—	PASS
4	BL	BL	BL	BL	BL	—	—	PASS
5	BL	BL	BL	BL	BL	—	—	PASS
6	BL	BL	BL	BL	BL	—	—	PASS
7	BL	BL	BL	BL	BL	—	—	PASS
8	BL	BL	BL	BL	BL	—	—	PASS
9	BL	BL	BL	BL	BL	—	—	PASS
10	BL	BL	BL	BL	BL	—	—	PASS
11	BL	BL	BL	BL	BL	—	—	PASS
12	BL	BL	BL	BL	BL	—	—	PASS
13	BL	BL	BL	BL	BL	—	—	PASS
14	BL	BL	BL	BL	BL	—	—	PASS
15	BL	BL	BL	BL	BL	—	—	PASS
16	BL	BL	BL	BL	BL	—	—	PASS
17	BL	BL	BL	BL	BL	—	—	PASS
18	BL	BL	BL	BL	BL	—	—	PASS
19	BL	BL	BL	BL	BL	—	—	PASS
20	BL	BL	BL	BL	BL	—	—	PASS
21	BL	BL	BL	BL	BL	—	—	PASS
22	BL	BL	BL	BL	BL	—	—	PASS
23	BL	BL	BL	BL	BL	—	—	PASS

This report is valid only with a valid digital signature. The digital signature may be available only under the Adobe software above version 7.0.

# Test Report

Report No.: U03601201022805E

Query Password: QW8897

Date: Nov. 12, 2020

Page 8 of 16

No.	EDXRF Result <sup>(1)</sup>					Chemical Result <sup>(2)</sup> (mg/kg)	Remark <sup>(3)</sup>	Conclusion
	Pb	Cd	Hg	Cr	Br			
24	BL	BL	BL	BL	BL	—	—	PASS
25	BL	BL	BL	BL	BL	—	—	PASS
26	BL	BL	BL	BL	BL	—	—	PASS
27	BL	BL	BL	BL	BL	—	—	PASS
28	BL	BL	BL	BL	BL	—	—	PASS
29	BL	BL	BL	BL	BL	—	—	PASS
30	BL	BL	BL	BL	BL	—	—	PASS
31	BL	BL	BL	BL	BL	—	—	PASS
32	BL	BL	BL	BL	BL	—	—	PASS
33	BL	BL	BL	BL	BL	—	—	PASS
34	BL	BL	BL	BL	BL	—	—	PASS
35	BL	BL	BL	BL	BL	—	—	PASS
36	BL	BL	BL	BL	BL	—	—	PASS
37	BL	BL	BL	BL	BL	—	—	PASS
38	BL	BL	BL	BL	BL	—	—	PASS
39	BL	BL	BL	BL	BL	—	—	PASS
40	BL	BL	BL	BL	BL	—	—	PASS
41	BL	BL	BL	BL	BL	—	—	PASS
42	BL	BL	BL	BL	BL	—	—	PASS
43	BL	BL	BL	BL	BL	—	—	PASS
44	BL	BL	BL	BL	BL	—	—	PASS
45	BL	BL	BL	BL	BL	—	—	PASS
46	BL	BL	BL	BL	X	PBBs: N.D. PBDEs: N.D.	—	PASS
47	BL	BL	BL	BL	X	PBBs: N.D. PBDEs: N.D.	—	PASS
48	BL	BL	BL	BL	BL	—	—	PASS
49	BL	BL	BL	BL	BL	—	—	PASS

This report is valid only with a valid digital signature. The digital signature may be available only under the Adobe software above version 7.0.



# Test Report

Report No.: U03601201022805E

Query Password: QW8897

Date: Nov. 12, 2020

Page 9 of 16

No.	EDXRF Result <sup>(1)</sup>					Chemical Result <sup>(2)</sup> (mg/kg)	Remark <sup>(3)</sup>	Conclusion
	Pb	Cd	Hg	Cr	Br			
50	BL	BL	BL	BL	BL	—	—	PASS
51	BL	BL	BL	BL	BL	—	—	PASS
52	BL	BL	BL	BL	BL	—	—	PASS
53	BL	BL	BL	BL	BL	—	—	PASS
54	BL	BL	BL	BL	BL	—	—	PASS
55	BL	BL	BL	BL	BL	—	—	PASS
56	BL	BL	BL	BL	BL	—	—	PASS
57	BL	BL	BL	BL	BL	—	—	PASS
58	BL	BL	BL	BL	BL	—	—	PASS
59	BL	BL	BL	BL	BL	—	—	PASS
60	BL	BL	BL	BL	BL	—	—	PASS
61	BL	BL	BL	BL	BL	—	—	PASS
62	BL	BL	BL	BL	BL	—	—	PASS
63	BL	BL	BL	BL	BL	—	—	PASS
64	BL	BL	BL	BL	BL	—	—	PASS
65	BL	BL	BL	BL	BL	—	—	PASS
66	BL	BL	BL	BL	BL	—	—	PASS
67	BL	BL	BL	BL	BL	—	—	PASS
68	BL	BL	BL	BL	BL	—	—	PASS
69	BL	BL	BL	BL	BL	—	—	PASS
70	BL	BL	BL	BL	BL	—	—	PASS
71	BL	BL	BL	BL	BL	—	—	PASS
72	BL	BL	BL	BL	BL	—	—	PASS
73	BL	BL	BL	BL	BL	—	—	PASS
74	BL	BL	BL	BL	BL	—	—	PASS
75	BL	BL	BL	BL	X	PBBs: N.D. PBDEs: N.D.	—	PASS

This report is valid only with a valid digital signature. The digital signature may be available only under the Adobe software above version 7.0.

# Test Report

Report No.: U03601201022805E

Query Password: QW8897

Date: Nov. 12, 2020

Page 10 of 16

No.	EDXRF Result <sup>(1)</sup>					Chemical Result <sup>(2)</sup> (mg/kg)	Remark <sup>(3)</sup>	Conclusion
	Pb	Cd	Hg	Cr	Br			
76	BL	BL	BL	BL	BL	—	Nov. 6, 2020.	PASS
77	BL	BL	BL	BL	BL	—	—	PASS
78	BL	BL	BL	BL	BL	—	—	PASS
79	BL	BL	BL	BL	BL	—	—	PASS
80	BL	BL	BL	BL	BL	—	—	PASS
81	BL	BL	BL	BL	BL	—	—	PASS
82	BL	BL	BL	BL	BL	—	—	PASS
83	BL	BL	BL	BL	BL	—	—	PASS

Remark:

(1) ① Results are obtained by EDXRF for primary screening, and further wet chemical testing by ICP-OES (for Cd, Pb, Hg), UV-VIS (for Cr(VI)) and GC/MS (for PBBs, PBDEs) is recommended to be performed, if an inconclusive result was found (as "X" in below table) (unit: mg/kg).

② OL = Over Limit, BL = Below Limit, X = Inconclusive, NA = Not Applicable.

③ The EDXRF screening test for RoHS elements – The reading may be different to the actual content in the sample be of non-uniformity composition.

Element	Polymer	Metal	Composite Materials
Cd	$BL \leq (70-3\sigma) < X < (130+3\sigma) \leq OL$	$BL \leq (70-3\sigma) < X < (130+3\sigma) \leq OL$	$LOD < X < (150+3\sigma) \leq OL$
Pb	$BL \leq (700-3\sigma) < X < (1300+3\sigma) \leq OL$	$BL \leq (700-3\sigma) < X < (1300+3\sigma) \leq OL$	$BL \leq (500-3\sigma) < X < (1500+3\sigma) \leq OL$
Hg	$BL \leq (700-3\sigma) < X < (1300+3\sigma) \leq OL$	$BL \leq (700-3\sigma) < X < (1300+3\sigma) \leq OL$	$BL \leq (500-3\sigma) < X < (1500+3\sigma) \leq OL$
Br	$BL \leq (300-3\sigma) < X$	NA	$BL \leq (250-3\sigma) < X$
Cr	$BL \leq (700-3\sigma) < X$	$BL \leq (700-3\sigma) < X$	$BL \leq (500-3\sigma) < X$

Units and limits in EU RoHS Directive 2011/65/EU:

Element	Pb	Cd	Hg	Cr(VI)	PBBs(single)	PBDEs(single)
Unit	mg/kg	mg/kg	mg/kg	mg/kg	mg/kg	mg/kg
Limit	1000	100	1000	1000	1000	1000

(2) ① mg/kg = ppm = 0.0001%, N.D. = Not Detected (Less than RL).

This report is valid only with a valid digital signature. The digital signature may be available only under the Adobe software above version 7.0.

# Test Report

Report No.: U03601201022805E

Query Password: QW8897

Date: Nov. 12, 2020

Page 11 of 16

②Unit and RL (Report limit) in wet chemical test.

Element	Pb	Cd	Hg	Cr(VI)	PBBs(single)	PBDEs(single)
Unit	mg/kg	mg/kg	mg/kg	mg/kg	mg/kg	mg/kg
RL	2	2	2	8	5	5

③According to IEC 62321-7-1:2015, result on Cr(VI) for metal sample is shown as Positive/Negative.

Negative = Absence of Cr(VI) coating, Positive = Presence of Cr(VI) coating.

Storage condition and production date of the tested sample are unavailable and thus results of Cr(VI) represent status of the sample at the time of testing.

④ According to IEC 62321-3-1:2013, this column represents the results of wet chem test.

(3) This column represents the exempted decoration of material or other related testing sample's information.

## (2) Phthalates (DBP, BBP, DEHP, DIBP) content

Test Method: IEC 62321-8: 2017, analyzed by gas chromatographic- mass spectrometer (GC-MS).

Substances	DBP	BBP	DEHP	DIBP	Conclusion
CAS No.	84-74-2	85-68-7	117-81-7	84-69-5	
Limit (mg/kg)	1000	1000	1000	1000	
RL (mg/kg)	30	30	30	30	
Material No.	Result (mg/kg)				
1	N.D.	N.D.	N.D.	N.D.	PASS
2	N.D.	N.D.	N.D.	N.D.	PASS
3	N.D.	N.D.	N.D.	N.D.	PASS
4	N.D.	N.D.	N.D.	N.D.	PASS
5	N.D.	N.D.	N.D.	N.D.	PASS
6	N.D.	N.D.	N.D.	N.D.	PASS
7	N.D.	N.D.	218	N.D.	PASS
8	N.D.	N.D.	N.D.	N.D.	PASS
9	N.D.	N.D.	N.D.	N.D.	PASS
10	N.D.	N.D.	N.D.	N.D.	PASS
11	N.D.	N.D.	N.D.	N.D.	PASS
12	N.D.	N.D.	N.D.	N.D.	PASS

This report is valid only with a valid digital signature. The digital signature may be available only under the Adobe software above version 7.0.

# Test Report

Report No.: U03601201022805E

Query Password: QW8897

Date: Nov. 12, 2020

Page 12 of 16

Substances	DBP	BBP	DEHP	DIBP	Conclusion
CAS No.	84-74-2	85-68-7	117-81-7	84-69-5	
Limit (mg/kg)	1000	1000	1000	1000	
RL (mg/kg)	30	30	30	30	
Material No.	Result (mg/kg)				
13	N.D.	N.D.	N.D.	N.D.	PASS
14	N.D.	N.D.	N.D.	N.D.	PASS
15	N.D.	N.D.	N.D.	N.D.	PASS
16	N.D.	N.D.	N.D.	N.D.	PASS
17	N.D.	N.D.	N.D.	N.D.	PASS
18	N.D.	N.D.	N.D.	N.D.	PASS
19	N.D.	N.D.	N.D.	N.D.	PASS
20	N.D.	N.D.	N.D.	N.D.	PASS
21	N.D.	N.D.	N.D.	N.D.	PASS
22	N.D.	N.D.	N.D.	N.D.	PASS
23	N.D.	N.D.	N.D.	N.D.	PASS
24	N.D.	N.D.	N.D.	N.D.	PASS
25	N.D.	N.D.	N.D.	N.D.	PASS
26	N.D.	N.D.	N.D.	N.D.	PASS
27	N.D.	N.D.	N.D.	N.D.	PASS
28	N.D.	N.D.	N.D.	N.D.	PASS
29	N.D.	N.D.	N.D.	N.D.	PASS
30	N.D.	N.D.	N.D.	N.D.	PASS
31	N.D.	N.D.	N.D.	N.D.	PASS
32	N.D.	N.D.	N.D.	N.D.	PASS
33	N.D.	N.D.	N.D.	N.D.	PASS
34	N.D.	N.D.	N.D.	N.D.	PASS
35	N.D.	N.D.	N.D.	N.D.	PASS
36	N.D.	N.D.	N.D.	N.D.	PASS

This report is valid only with a valid digital signature. The digital signature may be available only under the Adobe software above version 7.0.

# Test Report

Report No.: U03601201022805E

Query Password: QW8897

Date: Nov. 12, 2020

Page 13 of 16

Substances	DBP	BBP	DEHP	DIBP	Conclusion
CAS No.	84-74-2	85-68-7	117-81-7	84-69-5	
Limit (mg/kg)	1000	1000	1000	1000	
RL (mg/kg)	30	30	30	30	
Material No.	Result (mg/kg)				
37	N.D.	N.D.	N.D.	N.D.	PASS
38	N.D.	N.D.	N.D.	N.D.	PASS
39	N.D.	N.D.	N.D.	N.D.	PASS
40	N.D.	N.D.	N.D.	N.D.	PASS
41	N.D.	N.D.	N.D.	N.D.	PASS
42	N.D.	N.D.	N.D.	N.D.	PASS
43	N.D.	N.D.	N.D.	N.D.	PASS
44	N.D.	N.D.	N.D.	N.D.	PASS
45	N.D.	N.D.	N.D.	N.D.	PASS
46	N.D.	N.D.	N.D.	N.D.	PASS
47	N.D.	N.D.	N.D.	N.D.	PASS
48	N.D.	N.D.	N.D.	N.D.	PASS
49	N.D.	N.D.	N.D.	N.D.	PASS
50	N.D.	N.D.	N.D.	N.D.	PASS
51	N.D.	N.D.	N.D.	N.D.	PASS
52	N.D.	N.D.	N.D.	N.D.	PASS
53	N.D.	N.D.	N.D.	N.D.	PASS
54	N.D.	N.D.	N.D.	N.D.	PASS
55	N.D.	N.D.	N.D.	N.D.	PASS
56	N.D.	N.D.	N.D.	N.D.	PASS
57	N.D.	N.D.	N.D.	N.D.	PASS
58	N.D.	N.D.	N.D.	N.D.	PASS
59	N.D.	N.D.	N.D.	N.D.	PASS
60	N.D.	N.D.	N.D.	N.D.	PASS

This report is valid only with a valid digital signature. The digital signature may be available only under the Adobe software above version 7.0.

# Test Report

Report No.: U03601201022805E

Query Password: QW8897

Date: Nov. 12, 2020

Page 14 of 16

Substances	DBP	BBP	DEHP	DIBP	Conclusion
CAS No.	84-74-2	85-68-7	117-81-7	84-69-5	
Limit (mg/kg)	1000	1000	1000	1000	
RL (mg/kg)	30	30	30	30	
Material No.	Result (mg/kg)				
61	N.D.	N.D.	N.D.	N.D.	PASS
62	N.D.	N.D.	131	N.D.	PASS
63	N.D.	N.D.	N.D.	N.D.	PASS
64	N.D.	N.D.	N.D.	N.D.	PASS
65	N.D.	N.D.	N.D.	N.D.	PASS
66	N.D.	N.D.	N.D.	N.D.	PASS
67	N.D.	N.D.	N.D.	N.D.	PASS
68	N.D.	N.D.	400	N.D.	PASS
69	N.D.	N.D.	N.D.	N.D.	PASS
70	N.D.	N.D.	N.D.	N.D.	PASS
71	N.D.	N.D.	122	N.D.	PASS
72	N.D.	N.D.	N.D.	N.D.	PASS
73	N.D.	N.D.	N.D.	N.D.	PASS
74	N.D.	N.D.	N.D.	N.D.	PASS
75	N.D.	N.D.	N.D.	N.D.	PASS
76	N.D.	N.D.	202	N.D.	PASS
77	N.D.	N.D.	N.D.	N.D.	PASS
78	N.D.	N.D.	N.D.	N.D.	PASS
79	N.D.	N.D.	N.D.	N.D.	PASS
80	N.D.	N.D.	N.D.	N.D.	PASS
81	N.D.	N.D.	N.D.	N.D.	PASS
82	N.D.	N.D.	N.D.	N.D.	PASS
83	N.D.	N.D.	N.D.	N.D.	PASS

This report is valid only with a valid digital signature. The digital signature may be available only under the Adobe software above version 7.0.

## Test Report

Report No.: U03601201022805E

Query Password: QW8897

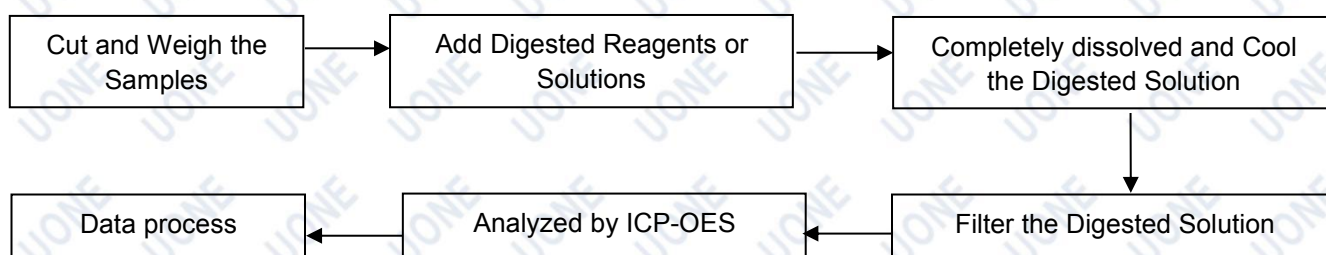
Date: Nov. 12, 2020

Page 15 of 16

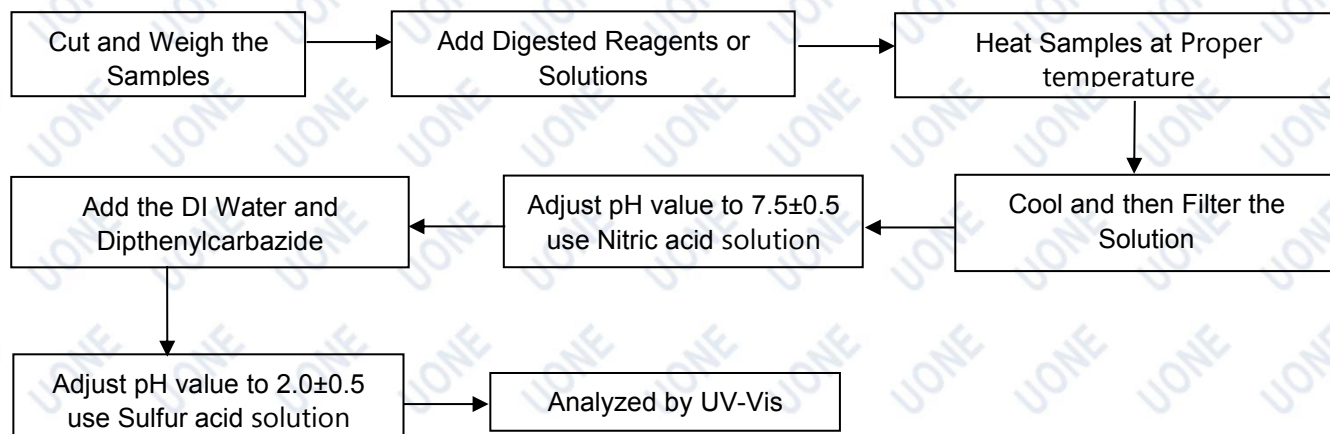
- Note:**
1. mg/kg = milligram per kilogram (ppm).
  2. RL = report limit.
  3. N.D.=not detected(less than RL).

### Test Process Flow

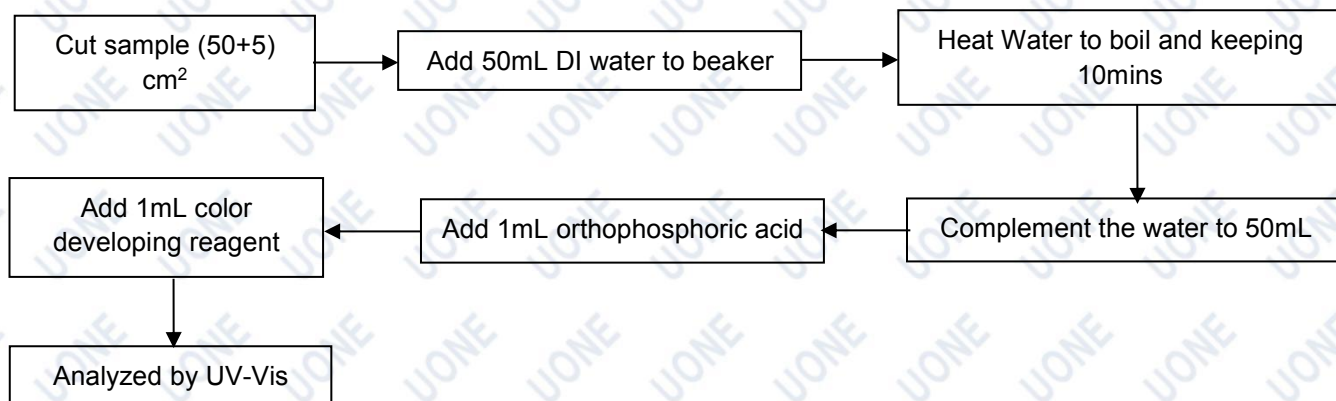
#### 1. Lead, Cadmium, Mercury



#### 2. Hexavalent Chromium (Non-metal)



#### Hexavalent Chromium (Metal)



This report is valid only with a valid digital signature. The digital signature may be available only under the Adobe software above version 7.0.

# Test Report

Report No.: U03601201022805E

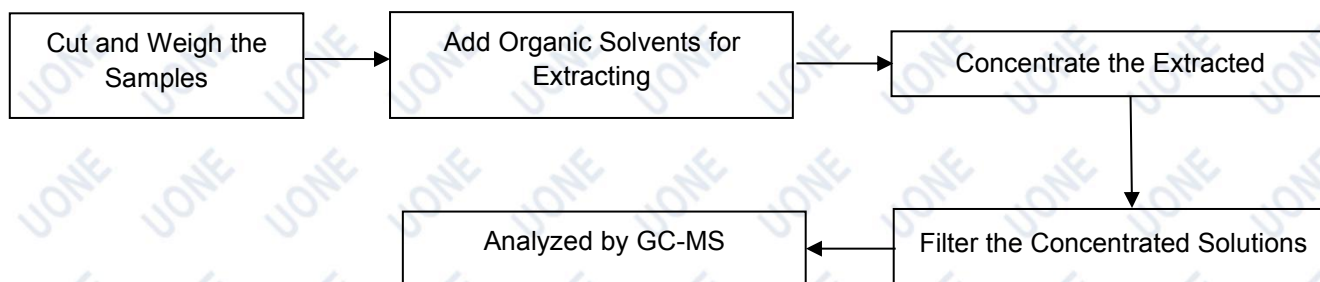
Query Password: QW8897

Date: Nov. 12, 2020

Page 16 of 16

## Test Process Flow (Continued):

### 3. PBBs & PBDEs, Phthalates



## Photo(s) of Sample:



\*\*\*End of Report\*\*\*

This report is considered invalidated without the Special Seal for Inspection of the UONE, This report shall not be altered, increased or deleted. The results shown in this test report refer only to the sample tested. Without written approval of UONE, this report shall not be copied and published as advertisement.

This report is valid only with a valid digital signature. The digital signature may be available only under the Adobe software above version 7.0.