



# TEST REPORT



中国认可  
国际互认  
检测  
Page 1 of 21  
TESTING  
CNAS L13445

Report No.: LCS220318003ER

Date: 2022.03.23

**Applicant** : Olansi Healthcare Co.,Ltd.

**Address** : 1 Haiyi street,Lanhe town, Nansha,Guangzhou, Guangdong, China

**Report on the submitted samples said to be:**

**Sample Name** : Hydrogen Water Bottle

**Trade Mark** : N/A

**Style No.** : H8、H6

**Testing Period** : March 18, 2022 ~ March 23, 2022

**Results** : Please refer to next page(s).

TEST REQUEST	CONCLUSION
<p>According to the customer's request, based on the performed tests on submitted sample, the result of Lead(Pb), Cadmium(Cd), Mercury(Hg), Hexavalent Chromium(Cr(VI)), PBBs, PBDEs, Dibutyl Phthalate(DBP), Benzylbutyl Phthalate(BBP), Bis(2-ethylhexyl) Phthalate(DEHP), Diisobutyl phthalate(DIBP) content comply with the limit requirement as set of RoHS Directive (EU) 2015/863 amending Annex II to Directive 2011/65/EU.</p>	<p style="text-align: center;">Pass</p>

SSigned for and on behalf of LCS

*Imanol Yan*

Imanol Yan



Ningbo LCS Standard Technology Service Co., Ltd.

Add: 101-106, 202-206, Building 037, No. 166, Jinghua Road, Meixu Street, Ningbo High-tech Zone, Yinzhou District, Ningbo City, Zhejiang Province, China

Tel: +(86) 0574-8790 8011 | E-mail: webmaster@lcs-cert.com | http:// www.lcs-cert.com



# TEST REPORT

Report No.: LCS220318003ER

Date: 2022.03.23

Page 2 of 21

## Results:

### **A.EU RoHS Directive 2011/65/EU and its amendment directives on XRF**

Test method: With reference to IEC 62321-3-1:2013, Screening by X-ray Fluorescence Spectroscopy (XRF)

Seq. No.	Tested Part(s)	Results						Date of sample submission/resubmission
		Cd	Pb	Hg	Cr <sup>v</sup>	Br <sup>v</sup>		
						PBBs	PBDEs	
1	White plastic	BL	BL	BL	BL	BL	BL	2022-03-18
2	Silver metal	BL	BL	BL	BL	/	/	2022-03-18
3	Silver strip	BL	BL	BL	BL	/	/	2022-03-18
4	White plastic	BL	BL	BL	BL	BL	BL	2022-03-18
5	Black plastic	BL	BL	BL	BL	BL	BL	2022-03-18
6	White plastic case	BL	BL	BL	BL	BL	BL	2022-03-18
7	White plastic wire cover	BL	BL	BL	BL	BL	BL	2022-03-18
8	Red plastic wire cover	BL	BL	BL	BL	BL	BL	2022-03-18
9	Black plastic wire leather	BL	BL	BL	BL	BL	BL	2022-03-18
10	Silver metal	BL	BL	BL	X	/	/	2022-03-18
11	Black plastic	BL	BL	BL	BL	BL	BL	2022-03-18
12	Silver metal	X	BL	BL	X	/	/	2022-03-18
13	PCB	BL	BL	BL	BL	/	/	2022-03-18
14	White plastic	BL	BL	BL	BL	BL	BL	2022-03-18
15	Black plastic case	BL	BL	BL	BL	BL	BL	2022-03-18
16	Blue-green metal case	OL	OL	BL	X	/	/	2022-03-18
17	White plastic case	BL	BL	BL	BL	BL	BL	2022-03-18
18	Transparent rubber ring	BL	BL	BL	BL	BL	BL	2022-03-18
19	Silver metal screw	BL	BL	BL	X	/	/	2022-03-18
20	White plastic	BL	BL	BL	BL	BL	BL	2022-03-18
21	White rubber mat	BL	BL	BL	BL	BL	BL	2022-03-18
22	Silver metal spring	BL	BL	BL	X	/	/	2022-03-18
23	Transparent plastic case	BL	BL	BL	BL	BL	BL	2022-03-18



Ningbo LCS Standard Technology Service Co., Ltd.

Add: 101-106, 202-206, Building 037, No. 166, Jinghua Road, Meixu Street, Ningbo High-tech Zone, Yinzhou District, Ningbo City, Zhejiang Province, China

Tel: +(86) 0574-8790 8011 | E-mail: webmaster@lcs-cert.com | http:// www.lcs-cert.com



# TEST REPORT

Report No.: LCS220318003ER

Date: 2022.03.23

Page 3 of 21

Seq. No.	Tested Part(s)	Results						Date of sample submission/resubmission
		Cd	Pb	Hg	Cr <sup>v</sup>	Br <sup>v</sup>		
						PBBs	PBDEs	
24	White rubber mat	BL	BL	BL	BL	BL	BL	2022-03-18
25	White sticker	BL	BL	BL	BL	BL	BL	2022-03-18
26	Black rubber pad	BL	BL	BL	BL	BL	BL	2022-03-18
27	Black rubber pad	BL	BL	BL	BL	BL	BL	2022-03-18
28	White plastic sticker	BL	BL	BL	BL	BL	BL	2022-03-18
29	Black plastic case	BL	BL	BL	BL	BL	BL	2022-03-18
30	Silver metal screw	BL	BL	BL	X	/	/	2022-03-18
31	White plastic	BL	BL	BL	BL	BL	BL	2022-03-18
32	Red plastic wire cover	BL	BL	BL	BL	BL	BL	2022-03-18
33	Black plastic wire leather	BL	BL	BL	BL	BL	BL	2022-03-18
34	Silver wire	BL	BL	BL	BL	/	/	2022-03-18
35	Blue plastic	BL	BL	BL	BL	BL	BL	2022-03-18
36	Black foam	BL	BL	BL	BL	BL	BL	2022-03-18
37	White plastic	BL	BL	BL	BL	BL	BL	2022-03-18
38	Blue plastic leather	BL	BL	BL	BL	BL	BL	2022-03-18
39	Black plastic wire leather	BL	BL	BL	BL	BL	BL	2022-03-18
40	Red plastic wire cover	BL	BL	BL	BL	BL	BL	2022-03-18
41	The patch exclusion	BL	BL	BL	BL	/	/	2022-03-18
42	SMD resistor	BL	BL	BL	BL	/	/	2022-03-18
43	solder	BL	BL	BL	BL	/	/	2022-03-18
44	Silver metal spring	BL	BL	BL	BL	/	/	2022-03-18
45	PCB	BL	BL	BL	BL	/	/	2022-03-18
46	Red plastic	BL	BL	BL	BL	BL	BL	2022-03-18
47	White plastic	BL	BL	BL	BL	BL	BL	2022-03-18
48	White plastic	BL	BL	BL	BL	BL	BL	2022-03-18



Ningbo LCS Standard Technology Service Co., Ltd.

Add: 101-106, 202-206, Building 037, No. 166, Jinghua Road, Meixu Street, Ningbo High-tech Zone, Yinzhou District, Ningbo City, Zhejiang Province, China

Tel: +(86) 0574-8790 8011 | E-mail: webmaster@lcs-cert.com | http:// www.lcs-cert.com



# TEST REPORT

Report No.: LCS220318003ER

Date: 2022.03.23

Page 4 of 21

Seq. No.	Tested Part(s)	Results						Date of sample submission/resubmission
		Cd	Pb	Hg	Cr <sup>v</sup>	Br <sup>v</sup>		
						PBBs	PBDEs	
49	SMD resistor	BL	BL	BL	BL	/	/	2022-03-18
50	The patch exclusion	BL	BL	BL	BL	/	/	2022-03-18
51	PCB	BL	BL	BL	BL	/	/	2022-03-18
52	Silver metal	BL	BL	BL	BL	/	/	2022-03-18
53	Silver metal	BL	BL	BL	X	/	/	2022-03-18
54	Black plastic	BL	BL	BL	BL	X	X	2022-03-18
55	Black plastic	BL	BL	BL	BL	BL	BL	2022-03-18
56	White plastic	BL	BL	BL	BL	BL	BL	2022-03-18
57	The patch capacitance	BL	BL	BL	BL	/	/	2022-03-18
58	SMD resistor	BL	BL	BL	BL	/	/	2022-03-18
59	Transparent rubber ring	BL	BL	BL	BL	BL	BL	2022-03-18
60	solder	BL	BL	BL	BL	/	/	2022-03-18
61	Black plastic	BL	BL	BL	BL	BL	BL	2022-03-18
62	Copper metal	BL	BL	BL	BL	/	/	2022-03-18
63	Black plastic	BL	BL	BL	BL	BL	BL	2022-03-18
64	Black plastic	BL	BL	BL	BL	BL	BL	2022-03-18
65	Black glass sheet	BL	BL	BL	BL	/	/	2022-03-18
66	Black plastic	BL	BL	BL	BL	BL	BL	2022-03-18
67	Yellow plastic	BL	BL	BL	BL	BL	BL	2022-03-18
68	Black plastic wire leather	BL	BL	BL	BL	BL	BL	2022-03-18
69	Red plastic wire cover	BL	BL	BL	BL	BL	BL	2022-03-18
70	Black plastic	BL	BL	BL	BL	BL	BL	2022-03-18
71	Transparent plastic	BL	BL	BL	BL	BL	BL	2022-03-18
72	White rubber ring	BL	BL	BL	BL	BL	BL	2022-03-18
73	White rubber ring	BL	BL	BL	BL	BL	BL	2022-03-18



Ningbo LCS Standard Technology Service Co., Ltd.

Add: 101-106, 202-206, Building 037, No. 166, Jinghua Road, Meixu Street, Ningbo High-tech Zone, Yinzhou District, Ningbo City, Zhejiang Province, China

Tel: +(86) 0574-8790 8011 | E-mail: webmaster@lcs-cert.com | http:// www.lcs-cert.com



# TEST REPORT

Report No.: LCS220318003ER

Date: 2022.03.23

Page 5 of 21

Seq. No.	Tested Part(s)	Results						Date of sample submission/resubmission
		Cd	Pb	Hg	Cr <sup>v</sup>	Br <sup>v</sup>		
						PBBs	PBDEs	
74	White rubber ring	BL	BL	BL	BL	BL	BL	2022-03-18
75	Black plastic	BL	BL	BL	BL	BL	BL	2022-03-18
76	Black foam	BL	BL	BL	BL	BL	BL	2022-03-18
77	Silver metal	BL	BL	BL	X	/	/	2022-03-18
78	Silver metal	BL	BL	BL	BL	/	/	2022-03-18
79	Silver metal nut	BL	BL	BL	X	/	/	2022-03-18
80	The silver screw	BL	BL	BL	X	/	/	2022-03-18
81	Transparent plastic	BL	BL	BL	BL	BL	BL	2022-03-18
82	Silver metal	OL	OL	BL	X	/	/	2022-03-18
83	White rubber ring	BL	BL	BL	BL	BL	BL	2022-03-18
84	White plastic	BL	BL	BL	BL	BL	BL	2022-03-18
85	Apricot metal sheet	OL	BL	BL	X	/	/	2022-03-18

\*\*\*\*\*



Ningbo LCS Standard Technology Service Co., Ltd.

Add: 101-106, 202-206, Building 037, No. 166, Jinghua Road, Meixu Street, Ningbo High-tech Zone, Yinzhou District, Ningbo City, Zhejiang Province, China

Tel: +(86) 0574-8790 8011 | E-mail: webmaster@lcs-cert.com | http:// www.lcs-cert.com



# TEST REPORT

Report No.: LCS220318003ER

Date: 2022.03.23

Page 6 of 21

Note:

- (1) Results were obtained by XRF for primary screening, and further chemical testing by ICP (for Cd, Pb, Hg), UV-Vis (for Cr(VI)) and GC-MS (for PBBs, PBDEs) are recommended to be performed, if the concentration exceeds the below warning value according to IEC 62321-3-1:2013.

Element	Unit	Non-metal	Metal	Composite Material
Cd	mg/kg	BL≤70-3σ<X <130+3σ≤OL	BL≤70-3σ<X <130+3σ≤OL	BL≤50-3σ<X <150+3σ≤OL
Pb	mg/kg	BL≤700-3σ<X <1300+3σ≤OL	BL≤700-3σ<X <1300+3σ≤OL	BL≤500-3σ<X <1500+3σ≤OL
Hg	mg/kg	BL≤700-3σ<X <1300+3σ≤OL	BL≤700-3σ<X <1300+3σ≤OL	BL≤500-3σ<X <1500+3σ≤OL
Cr	mg/kg	BL≤700-3σ<X	BL≤700-3σ<X	BL≤500-3σ<X
Br	mg/kg	BL≤300-3σ<X	--	BL≤250-3σ<X

Note:

- BL = Below Limit
- OL = Over Limit
- X = Inconclusive

- (2) The XRF screening test for RoHS elements – The reading may be different to the actual content in the sample be of non-uniformity composition.
- (3) The maximum permissible limit is quoted from the document 2015/863/EC amending RoHS directive 2011/65/EU:
- (4) ▼ =For restricted substances PBBs and PBDEs, the results show the total Br content; The restricted substance was Cr(VI), and the results showed the total Cr content

\*\*\*\*\*



Ningbo LCS Standard Technology Service Co., Ltd.

Add: 101-106, 202-206, Building 037, No. 166, Jinghua Road, Meixu Street, Ningbo High-tech Zone, Yinzhou District, Ningbo City, Zhejiang Province, China

Tel: +(86) 0574-8790 8011 | E-mail: webmaster@lcs-cert.com | http:// www.lcs-cert.com



# TEST REPORT

Report No.: LCS220318003ER

Date: 2022.03.23

Page 7 of 21

RoHS Restricted Substances	Maximum Concentration Value (mg/kg) (by weight in homogenous materials)
Cadmium (Cd)	100
Lead (Pb)	1000
Mercury (Hg)	1000
Hexavalent Chromium (Cr(VI))	1000
Polybrominated biphenyls (PBBs)	1000
Polybrominated diphenylethers (PBDEs)	1000
Dibutyl Phthalate(DBP)	1000
Benzylbutyl Phthalate(BBP)	1000
Di-(2-ethylhexyl) Phthalate(DEHP)	1000
Diisobutyl phthalate(DIBP)	1000

**Disclaimers:**

This XRF Screening report is for reference purposes only. The applicant shall make its/his/her own judgment as to whether the information provided in this XRF screening report is sufficient for its/his/her purposes.

The result shown in this XRF screening report will differ based on various factors, including but not limited to, the sample size, thickness, area, surface flatness, equipment parameters and matrix effect (e.g. plastic, rubber, metal, glass, ceramic etc.). Further wet chemical pre-treatment with relevant chemical equipment analysis are required to obtain quantitative data.

\*\*\*\*\*



Ningbo LCS Standard Technology Service Co., Ltd.

Add: 101-106, 202-206, Building 037, No. 166, Jinghua Road, Meixu Street, Ningbo High-tech Zone, Yinzhou District, Ningbo City, Zhejiang Province, China

Tel: +(86) 0574-8790 8011 | E-mail: webmaster@lcs-cert.com | http:// www.lcs-cert.com



# TEST REPORT

Report No.: LCS220318003ER

Date: 2022.03.23

Page 8 of 21

**B. EU RoHS Directive 2011/65/EU and its amendment Directives 2015/863/EU on Lead, Cadmium, Mercury, Hexavalent Chromium, PBBs, PBDEs, DBP, BBP, DEHP, DIBP content.**

Test method:

Lead(Pb) & Cadmium(Cd) Content:

With reference to IEC 62321-5:2013, by acid digestion and analysis was performed by inductively coupled plasma atomic emission spectrometer (ICP-OES)

Hexavalent Chromium(Cr(VI)) Content:

With reference to IEC 62321-7-1:2015 or IEC 62321-7-2:2017, by alkaline digestion and analysis was performed by UV-visible spectrophotometer (UV-Vis)

BBP DBP DEHP & DIBP Content:

With reference to IEC 62321-8:2017, by solvent extraction and analysis was performed by gas chromatographic-mass spectrometer (GC-MS)

PBBs & PBDEs Content:

With reference to IEC 62321-6:2015, by solvent extraction and analysis was performed by gas chromatographic-mass spectrometer (GC-MS)

**1) The test results of Lead (Pb) and Cadmium (Cd)**

Item	Unit	MDL	Results			Limit
			12	16	82	
Lead Content (Pb)	mg/kg	5	N.D.	N.D.	N.D.	1000
Cadmium content(Cd)	mg/kg	5	N.D.	N.D.	N.D.	100

Item	Unit	MDL	Results	Limit
			85	
Lead Content (Pb)	mg/kg	5	N.D.	1000
Cadmium content(Cd)	mg/kg	5	N.D.	100

\*\*\*\*\*



Ningbo LCS Standard Technology Service Co., Ltd.

Add: 101-106, 202-206, Building 037, No. 166, Jinghua Road, Meixu Street, Ningbo High-tech Zone, Yinzhou District, Ningbo City, Zhejiang Province, China

Tel: +(86) 0574-8790 8011 | E-mail: webmaster@lcs-cert.com | http:// www.lcs-cert.com





# TEST REPORT

Report No.: LCS220318003ER

Date: 2022.03.23

Page 9 of 21

## 2) The test results of Hexavalent Chromium (Cr(VI))(metal)

Item	Unit	MDL	Results			Limit
			10	12	16	
HexavalentChromium(Cr(VI))▼	ug/cm <sup>2</sup>	0.10	N.D.	N.D.	N.D.	-

Item	Unit	MDL	Results			Limit
			19	22	30	
HexavalentChromium(Cr(VI))▼	ug/cm <sup>2</sup>	0.10	N.D.	N.D.	N.D.	-

Item	Unit	MDL	Results			Limit
			53	77	79	
HexavalentChromium(Cr(VI))▼	ug/cm <sup>2</sup>	0.10	N.D.	N.D.	N.D.	-

Item	Unit	MDL	Results			Limit
			80	82	85	
HexavalentChromium(Cr(VI))▼	ug/cm <sup>2</sup>	0.10	N.D.	N.D.	N.D.	-

\*\*\*\*\*



Ningbo LCS Standard Technology Service Co., Ltd.

Add: 101-106, 202-206, Building 037, No. 166, Jinghua Road, Meixu Street, Ningbo High-tech Zone, Yinzhou District, Ningbo City, Zhejiang Province, China

Tel: +(86) 0574-8790 8011 | E-mail: webmaster@lcs-cert.com | http:// www.lcs-cert.com



# TEST REPORT

Report No.: LCS220318003ER

Date: 2022.03.23

Page 10 of 21

Note:

- MDL = Method Detection Limit
- /= Not apply
- LOQ = Limit of Quantification, The LOQ of Hexavalent chromium is 0.10  $\mu\text{g}/\text{cm}^2$
- ▼ = a. The sample is positive for Cr(VI) if the Cr(VI) concentration is greater than 0.13 $\mu\text{g}/\text{cm}^2$ . The sample coating is considered to contain Cr(VI)  
 b. The sample is negative for Cr(VI) if Cr(VI) is N.D.(concentration less than 0.10 $\mu\text{g}/\text{cm}^2$ ). The sample coating is considered a non- Cr(VI) based coating  
 c. The result between 0.10 $\mu\text{g}/\text{cm}^2$  and 0.13 $\mu\text{g}/\text{cm}^2$  is considered to be inconclusive, unavoidable coating variations may influence the determination
- Information on storage conditions and production date of the tested samples is unavailable and thus Cr(VI) results represent status of the sample at the time of testing
- mg/kg = ppm=parts per million
- N.D.=Not Detected(<MDL or LOQ)
- #1 According to RoHS directive 2011/65/EU and its amendments, Lead is exempted in glass of cathode ray tubes, electronic components and fluorescent tubes.
- #2 According to RoHS directive 2011/65/EU and its amendments, Lead is exempted in electronic ceramic parts (e.g. piezoelectronic devices).
- #3 According to RoHS directive 2011/65/EU and its amendments, Lead is exempted as an alloying element in Copper containing up to 4% (40000ppm) by weight.
- #4 According to RoHS directive 2011/65/EU and its amendments, Lead is exempted in high melting temperature type solders (i.e. lead-based alloys containing 85 % by weight or more lead).
- #5 According to the statement provided by the customer, according to RoHS directive 2011/65/EU and its amendments, Lead is exempted as an alloying element in Aluminum containing up to 0.4% (4000ppm) by weight.
- #6 According to the statement provided by the customer, according to RoHS directive 2011/65/EU and its amendments, Cadmium and its compounds in electrical contact is exempted.
- #7 According to the statement provided by the customer, according to RoHS directive 2011/65/EU and its Amendments, Lead is exempted in steel for machining purposes and in galvanised steel containing up to 0.35% (3500ppm) by weight.
- Flow chart appendix is included.
- Photo appendix is included.

\*\*\*\*\*



Ningbo LCS Standard Technology Service Co., Ltd.

Add: 101-106, 202-206, Building 037, No. 166, Jinghua Road, Meixu Street, Ningbo High-tech Zone, Yinzhou District, Ningbo City, Zhejiang Province, China

Tel: +(86) 0574-8790 8011 | E-mail: webmaster@lcs-cert.com | http:// www.lcs-cert.com



# TEST REPORT

Report No.: LCS220318003ER

Date: 2022.03.23

Page 11 of 21

### 3) The test results of DBP、BBP、DEHP & DIBP

Item	Unit	MDL	Results			Limit
			68	6+7	26+27+76	
Dibutyl Phthalate(DBP)	mg/kg	100	N.D.	N.D.	N.D.	1000
Benzylbutyl Phthalate(BBP)	mg/kg	100	N.D.	N.D.	N.D.	1000
Di-(2-ethylhexyl) Phthalate(DEHP)	mg/kg	100	N.D.	N.D.	N.D.	1000
Diisobutyl phthalate(DIBP)	mg/kg	100	N.D.	N.D.	N.D.	1000

Item	Unit	MDL	Results		Limit
			1+21+24+59	32+33+69+70	
Dibutyl Phthalate(DBP)	mg/kg	100	N.D.	N.D.	1000
Benzylbutyl Phthalate(BBP)	mg/kg	100	N.D.	N.D.	1000
Di-(2-ethylhexyl) Phthalate(DEHP)	mg/kg	100	N.D.	N.D.	1000
Diisobutyl phthalate(DIBP)	mg/kg	100	N.D.	N.D.	1000

Item	Unit	MDL	Results	Limit
			8+9+38+39+40	
Dibutyl Phthalate(DBP)	mg/kg	100	N.D.	1000
Benzylbutyl Phthalate(BBP)	mg/kg	100	N.D.	1000
Di-(2-ethylhexyl) Phthalate(DEHP)	mg/kg	100	N.D.	1000
Diisobutyl phthalate(DIBP)	mg/kg	100	N.D.	1000

Item	Unit	MDL	Results	Limit
			18+72+73+74+83	
Dibutyl Phthalate(DBP)	mg/kg	100	N.D.	1000
Benzylbutyl Phthalate(BBP)	mg/kg	100	N.D.	1000
Di-(2-ethylhexyl) Phthalate(DEHP)	mg/kg	100	N.D.	1000
Diisobutyl phthalate(DIBP)	mg/kg	100	N.D.	1000



Ningbo LCS Standard Technology Service Co., Ltd.

Add: 101-106, 202-206, Building 037, No. 166, Jinghua Road, Meixu Street, Ningbo High-tech Zone, Yinzhou District, Ningbo City, Zhejiang Province, China

Tel: +(86) 0574-8790 8011 | E-mail: webmaster@lcs-cert.com | http:// www.lcs-cert.com



# TEST REPORT

Report No.: LCS220318003ER

Date: 2022.03.23

Page 12 of 21

Item	Unit	MDL	Results	Limit
			5+14+15+17+20	
Dibutyl Phthalate(DBP)	mg/kg	100	N.D.	1000
Benzylbutyl Phthalate(BBP)	mg/kg	100	N.D.	1000
Di-(2-ethylhexyl) Phthalate(DEHP)	mg/kg	100	N.D.	1000
Diisobutyl phthalate(DIBP)	mg/kg	100	N.D.	1000

Item	Unit	MDL	Results	Limit
			23+29+61+63+64	
Dibutyl Phthalate(DBP)	mg/kg	100	N.D.	1000
Benzylbutyl Phthalate(BBP)	mg/kg	100	N.D.	1000
Di-(2-ethylhexyl) Phthalate(DEHP)	mg/kg	100	N.D.	1000
Diisobutyl phthalate(DIBP)	mg/kg	100	N.D.	1000

Item	Unit	MDL	Results	Limit
			66+71+75+81+84	
Dibutyl Phthalate(DBP)	mg/kg	100	N.D.	1000
Benzylbutyl Phthalate(BBP)	mg/kg	100	N.D.	1000
Di-(2-ethylhexyl) Phthalate(DEHP)	mg/kg	100	N.D.	1000
Diisobutyl phthalate(DIBP)	mg/kg	100	N.D.	1000

Item	Unit	MDL	Results	Limit
			4+11+54+55+67	
Dibutyl Phthalate(DBP)	mg/kg	100	N.D.	1000
Benzylbutyl Phthalate(BBP)	mg/kg	100	N.D.	1000
Di-(2-ethylhexyl) Phthalate(DEHP)	mg/kg	100	N.D.	1000
Diisobutyl phthalate(DIBP)	mg/kg	100	N.D.	1000



Ningbo LCS Standard Technology Service Co., Ltd.

Add: 101-106, 202-206, Building 037, No. 166, Jinghua Road, Meixu Street, Ningbo High-tech Zone, Yinzhou District, Ningbo City, Zhejiang Province, China

Tel: +(86) 0574-8790 8011 | E-mail: webmaster@lcs-cert.com | http:// www.lcs-cert.com



# TEST REPORT

Report No.: LCS220318003ER

Date: 2022.03.23

Page 13 of 21

Item	Unit	MDL	Results	Limit
			25+28+35+36+56	
Dibutyl Phthalate(DBP)	mg/kg	100	N.D.	1000
Benzylbutyl Phthalate(BBP)	mg/kg	100	N.D.	1000
Di-(2-ethylhexyl) Phthalate(DEHP)	mg/kg	100	N.D.	1000
Diisobutyl phthalate(DIBP)	mg/kg	100	N.D.	1000

Item	Unit	MDL	Results	Limit
			31+37+46+47+48	
Dibutyl Phthalate(DBP)	mg/kg	100	N.D.	1000
Benzylbutyl Phthalate(BBP)	mg/kg	100	N.D.	1000
Di-(2-ethylhexyl) Phthalate(DEHP)	mg/kg	100	N.D.	1000
Diisobutyl phthalate(DIBP)	mg/kg	100	N.D.	1000

Remark:

- mg/kg = ppm
- N.D. = Not detected
- MDL=Method detected limited
- Flow chart appendix is included
- Photo appendix is included.

\*\*\*\*\*



Ningbo LCS Standard Technology Service Co., Ltd.

Add: 101-106, 202-206, Building 037, No. 166, Jinghua Road, Meixu Street, Ningbo High-tech Zone, Yinzhou District, Ningbo City, Zhejiang Province, China

Tel: +(86) 0574-8790 8011 | E-mail: webmaster@lcs-cert.com | http:// www.lcs-cert.com



# TEST REPORT

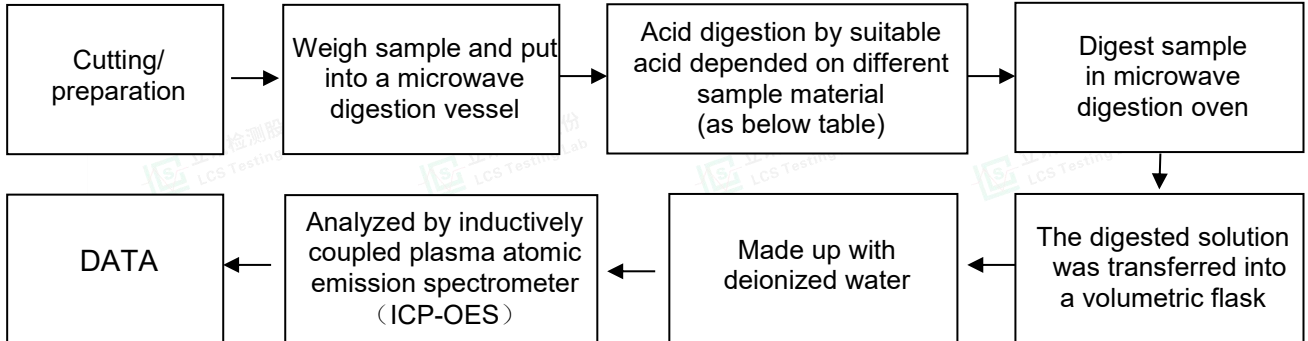
Report No.: LCS220318003ER

Date: 2022.03.23

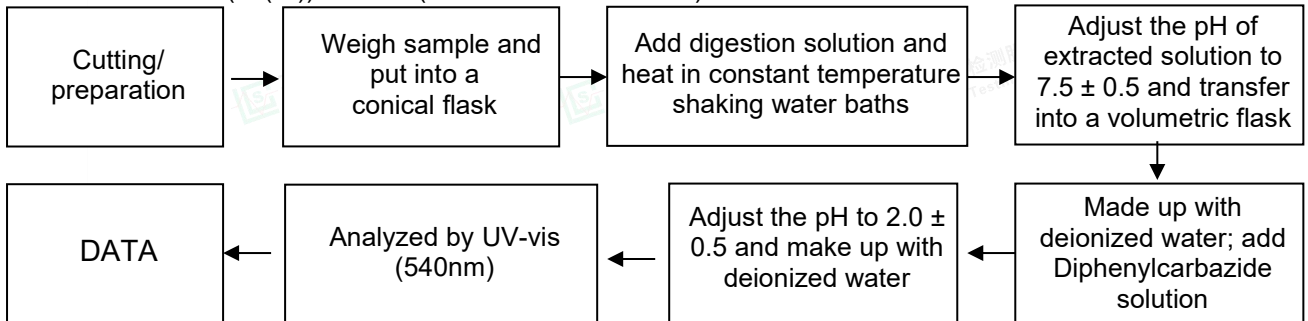
Page 14 of 21

## Appendix

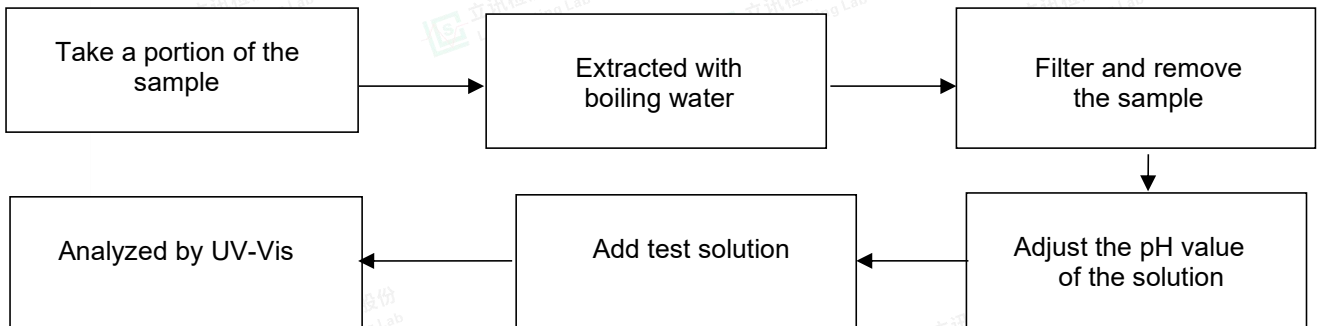
### 1. Test Flow chart for Cd/Pb /Hg content



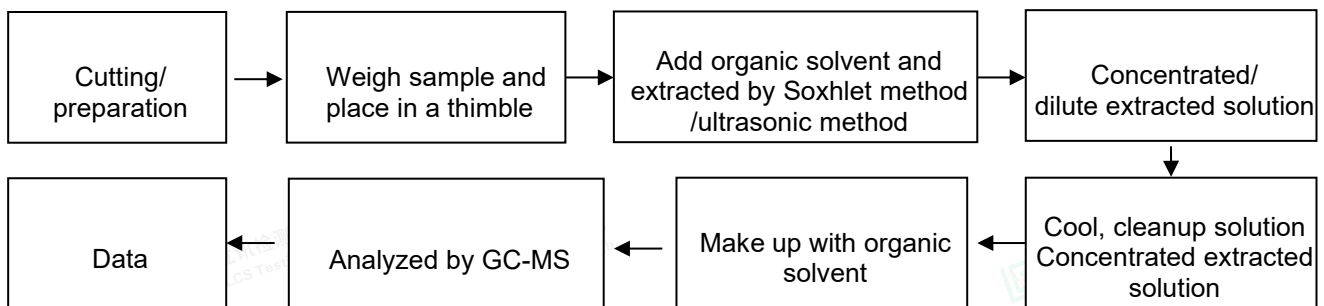
### 2. Test Flowchart for(Cr(VI)) content (For non-metal material)



### Test Flowchart for (Cr(VI)) content (For metal material)



### 3. Test Flow chart for PBBs & PBDEs & DBP & BBP & DEHP & DIBP content



\*\*\*\*\*



Ningbo LCS Standard Technology Service Co., Ltd.

Add: 101-106, 202-206, Building 037, No. 166, Jinghua Road, Meixu Street, Ningbo High-tech Zone, Yinzhou District, Ningbo City, Zhejiang Province, China

Tel: +(86) 0574-8790 8011 | E-mail: webmaster@lcs-cert.com | http:// www.lcs-cert.com



# TEST REPORT

Report No.: LCS220318003ER

Date: 2022.03.23

Page 15 of 21

## The photo of the sample



Ningbo LCS Standard Technology Service Co., Ltd.

Add: 101-106, 202-206, Building 037, No. 166, Jinghua Road, Meixu Street, Ningbo High-tech Zone, Yinzhou District, Ningbo City, Zhejiang Province, China

Tel: +(86) 0574-8790 8011 | E-mail: webmaster@lcs-cert.com | http:// www.lcs-cert.com

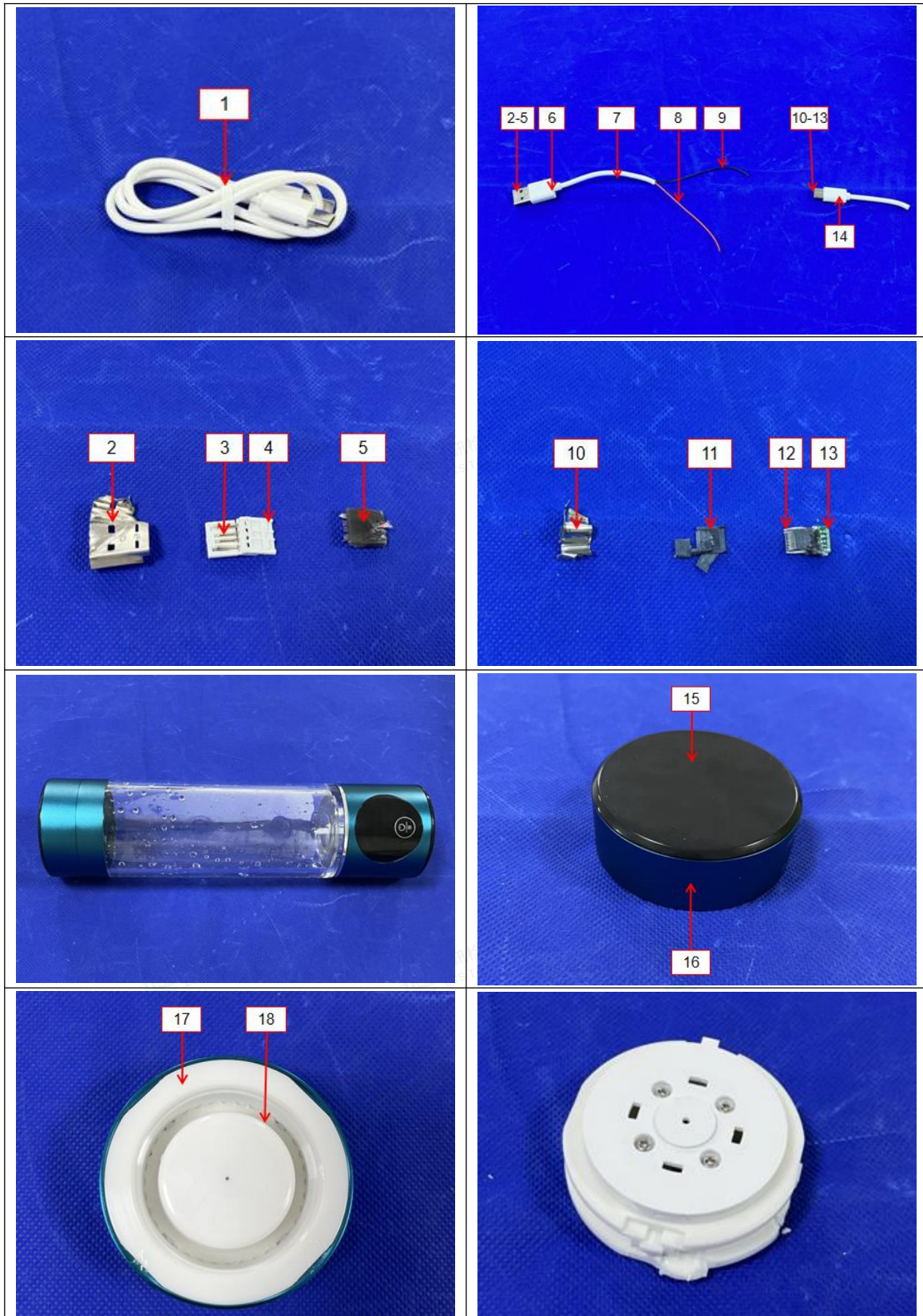


# TEST REPORT

Report No.: LCS220318003ER

Date: 2022.03.23

Page 16 of 21



Ningbo LCS Standard Technology Service Co., Ltd.

Add: 101-106, 202-206, Building 037, No. 166, Jinghua Road, Meixu Street, Ningbo High-tech Zone, Yinzhou District, Ningbo City, Zhejiang Province, China

Tel: +(86) 0574-8790 8011

| E-mail: [webmaster@lcs-cert.com](mailto:webmaster@lcs-cert.com)

| <http://www.lcs-cert.com>



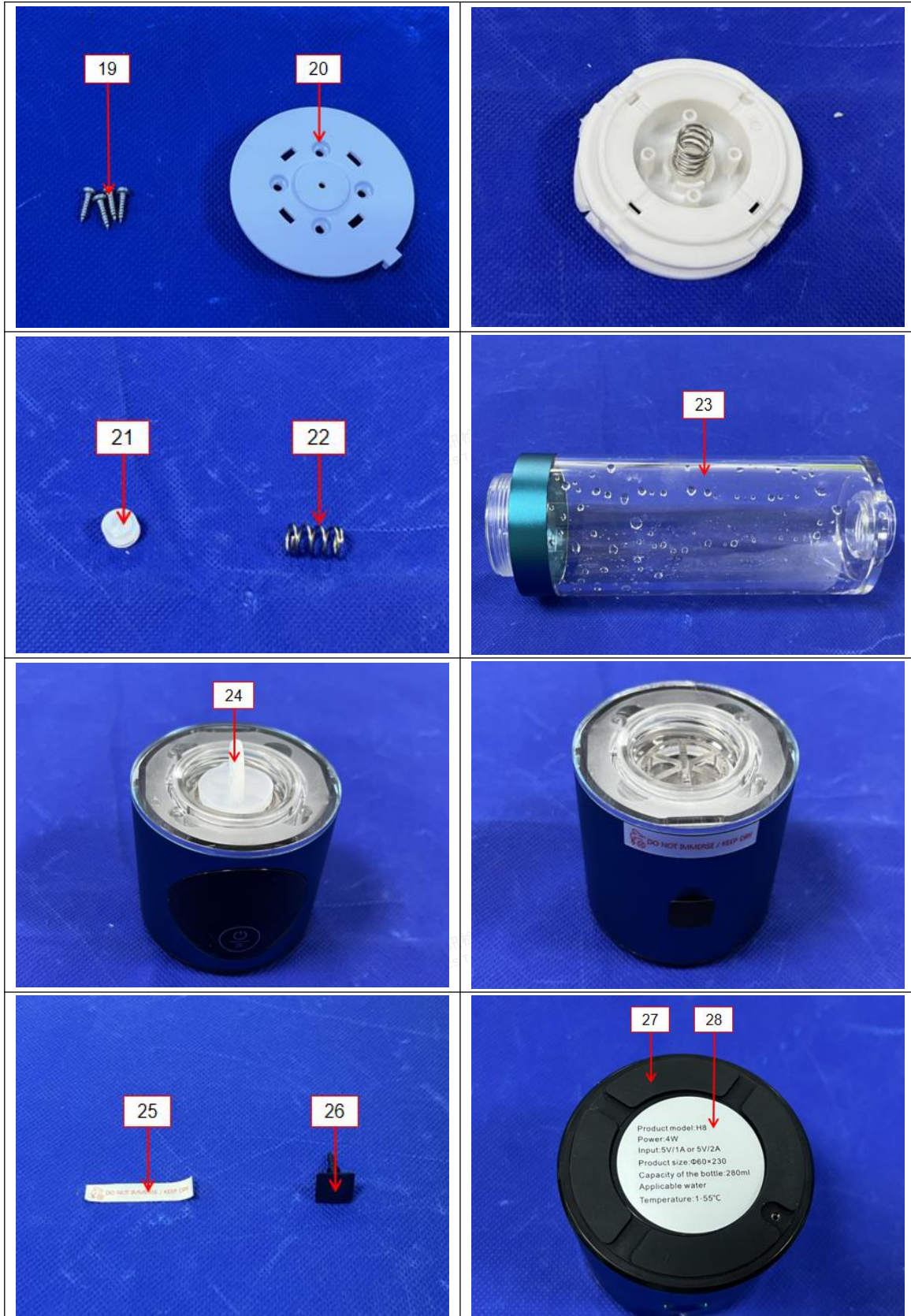


# TEST REPORT

Report No.: LCS220318003ER

Date: 2022.03.23

Page 17 of 21



Ningbo LCS Standard Technology Service Co., Ltd.

Add: 101-106, 202-206, Building 037, No. 166, Jinghua Road, Meixu Street, Ningbo High-tech Zone, Yinzhou District, Ningbo City, Zhejiang Province, China

Tel: +(86) 0574-8790 8011 | E-mail: webmaster@lcs-cert.com | http:// www.lcs-cert.com

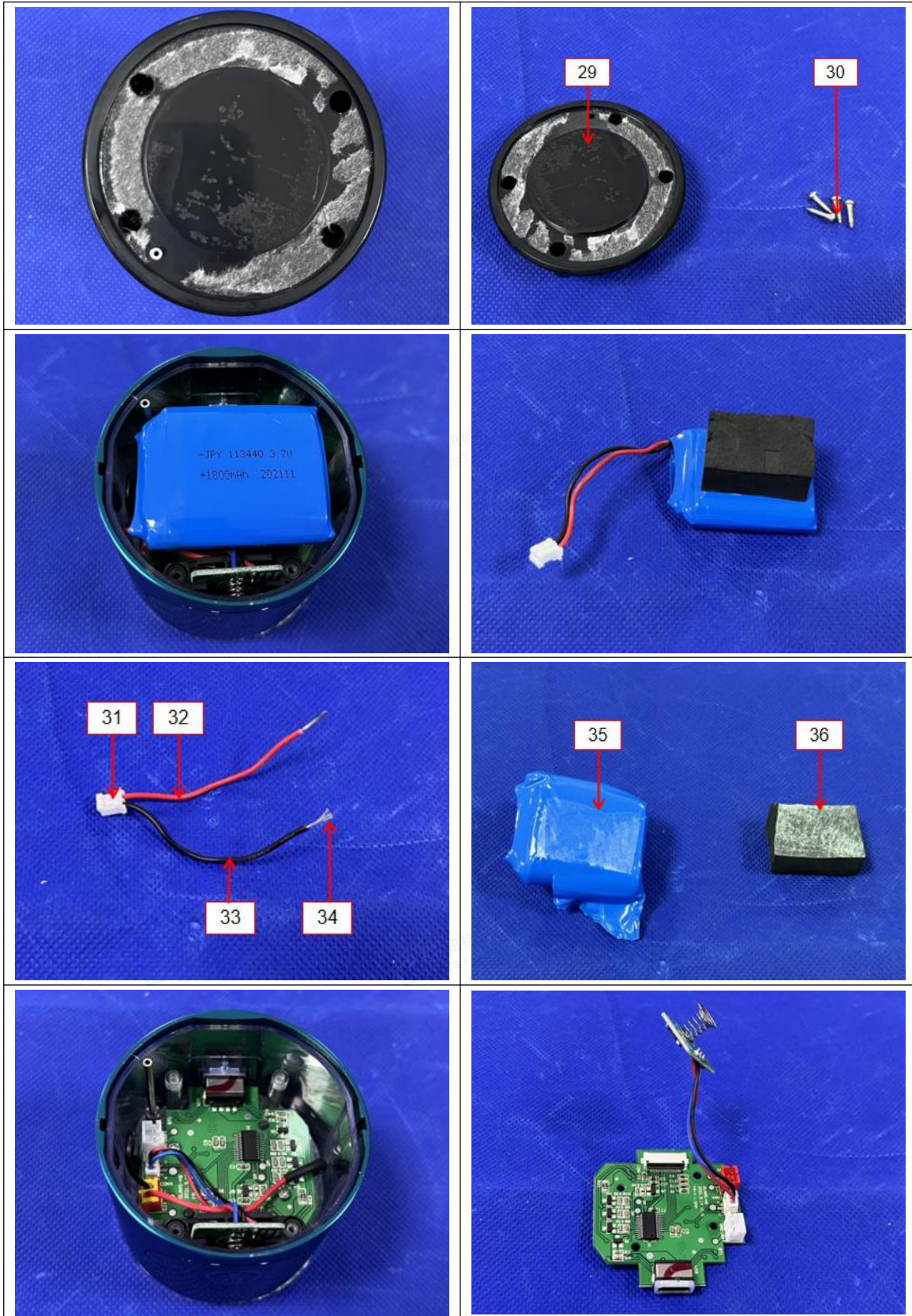


# TEST REPORT

Report No.: LCS220318003ER

Date: 2022.03.23

Page 18 of 21



Ningbo LCS Standard Technology Service Co., Ltd.

Add: 101-106, 202-206, Building 037, No. 166, Jinghua Road, Meixu Street, Ningbo High-tech Zone, Yinzhou District, Ningbo City, Zhejiang Province, China

Tel: +(86) 0574-8790 8011 | E-mail: webmaster@lcs-cert.com | http:// www.lcs-cert.com

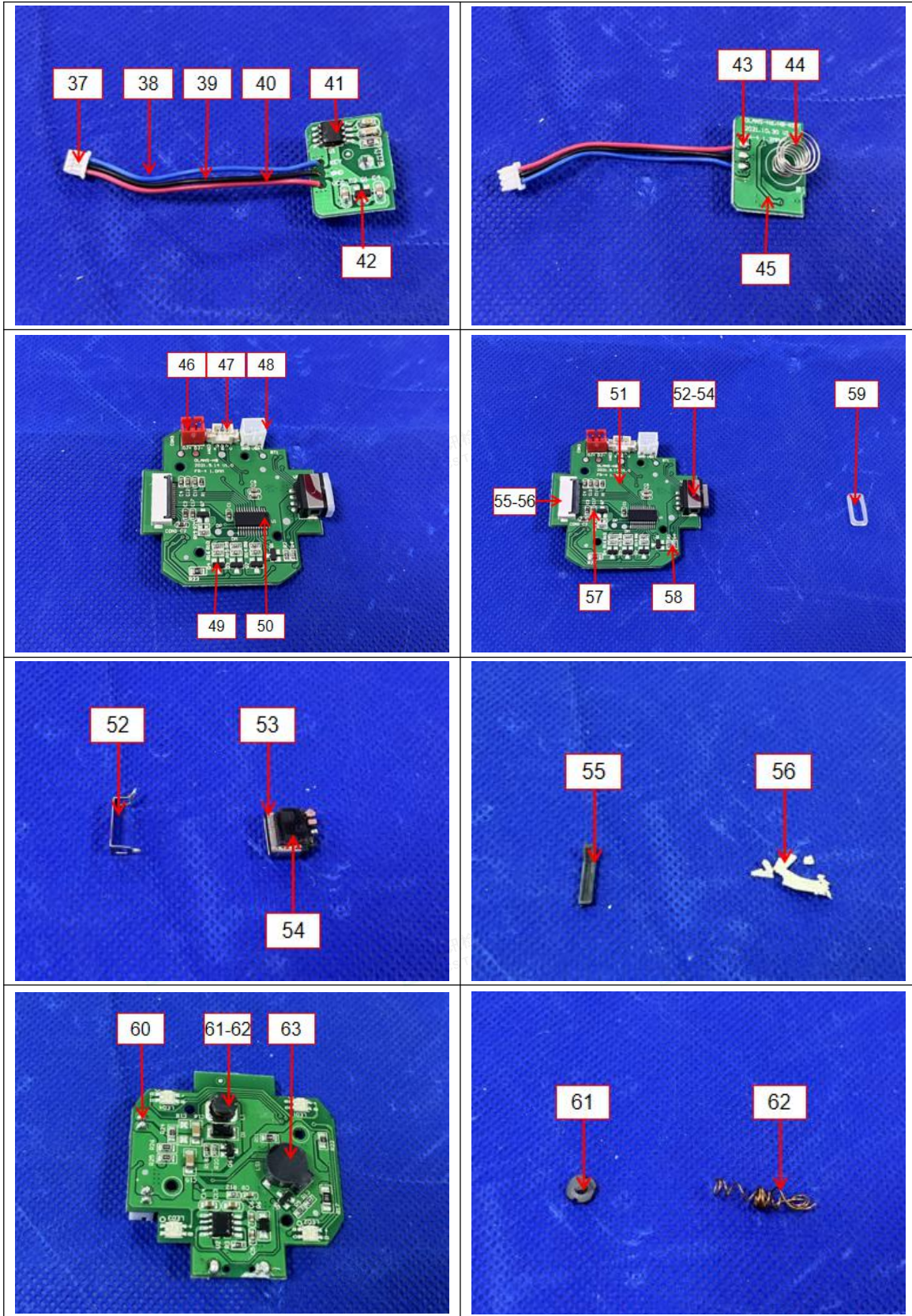


# TEST REPORT

Report No.: LCS220318003ER

Date: 2022.03.23

Page 19 of 21



Ningbo LCS Standard Technology Service Co., Ltd.

Add: 101-106, 202-206, Building 037, No. 166, Jinghua Road, Meixu Street, Ningbo High-tech Zone, Yinzhou District, Ningbo City, Zhejiang Province, China

Tel: +(86) 0574-8790 8011 | E-mail: webmaster@lcs-cert.com | http:// www.lcs-cert.com

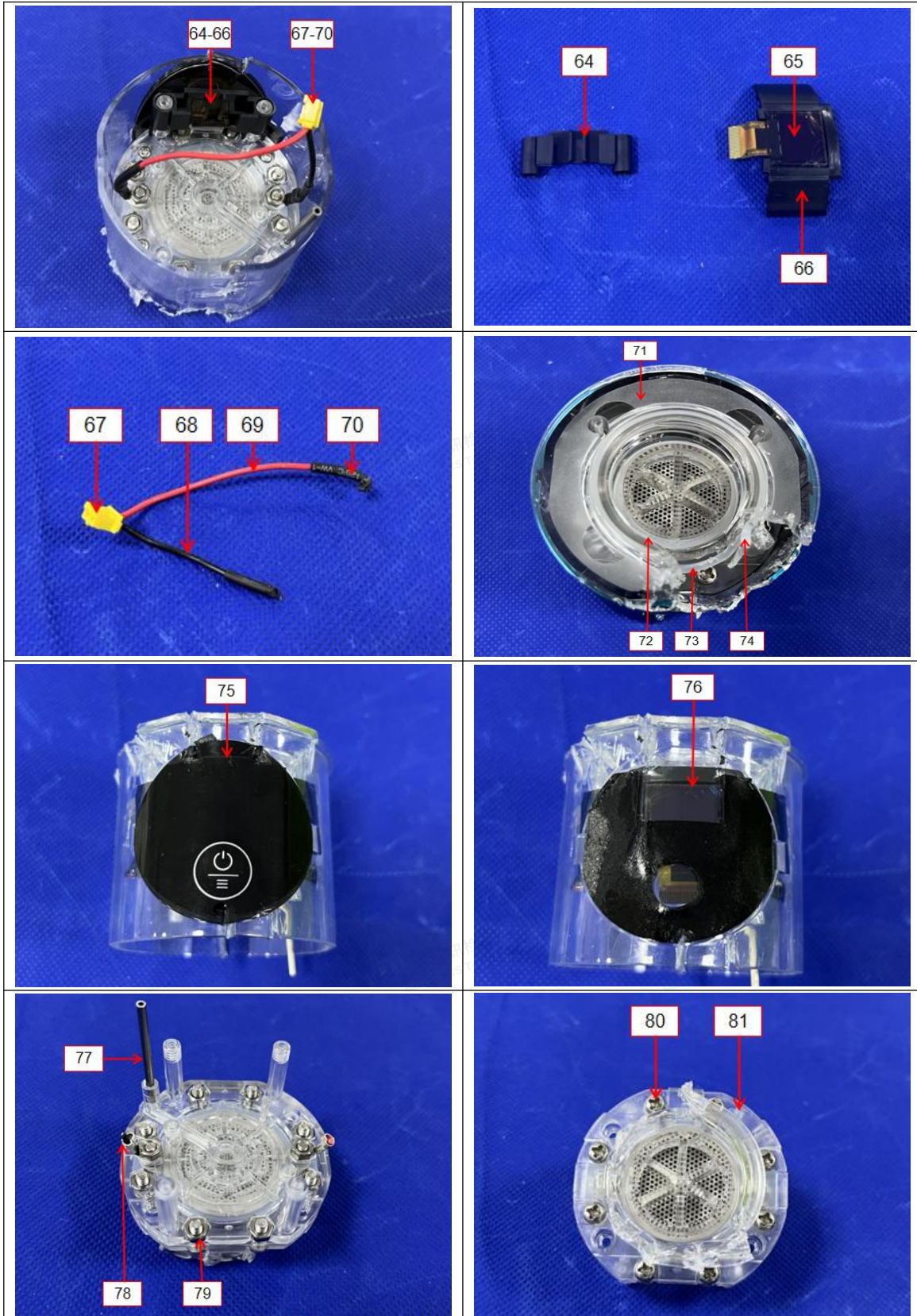


# TEST REPORT

Report No.: LCS220318003ER

Date: 2022.03.23

Page 20 of 21



Ningbo LCS Standard Technology Service Co., Ltd.

Add: 101-106, 202-206, Building 037, No. 166, Jinghua Road, Meixu Street, Ningbo High-tech Zone, Yinzhou District, Ningbo City, Zhejiang Province, China

Tel: +(86) 0574-8790 8011

| E-mail: [webmaster@lcs-cert.com](mailto:webmaster@lcs-cert.com)

| <http://www.lcs-cert.com>

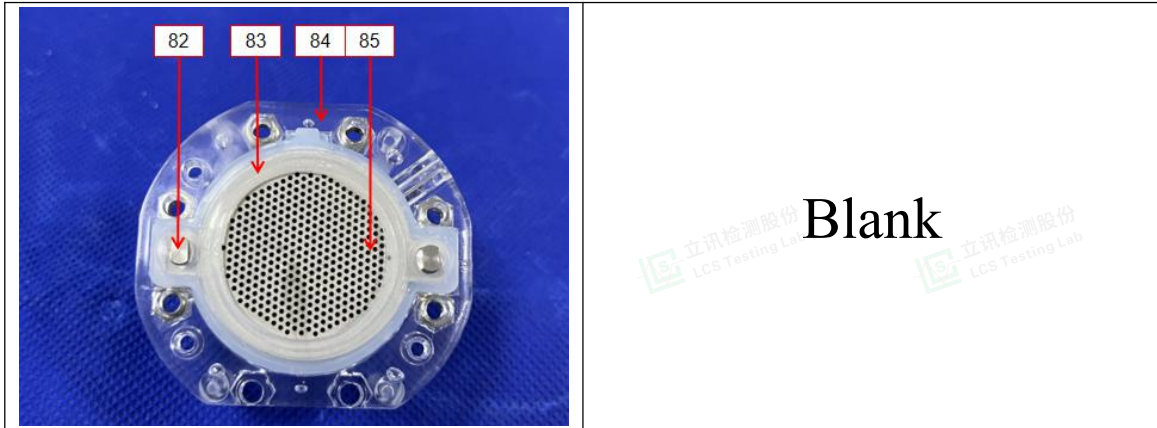


# TEST REPORT

Report No.: LCS220318003ER

Date: 2022.03.23

Page 21 of 21



LCS authenticate the photo on original report only

### Statement:

1. The test report is considered invalidated without approval signature, special seal on the perforation.
2. The result(s) shown in this report refer only to the sample(s) tested.
3. Without written approval of LCS, this report can't be reproduced except in full.
4. The sample(s) and sample information was/were provided by the client who should be responsible for the authenticity which LCS hasn't verified.
5. In case of any discrepancy between the English version and Chinese version of the testing reports(if generated), the Chinese version shall prevail.
6. The applicant and manufacturer information, product name, model, trademark and other information in this report are all provided by the applicant, and this laboratory is not responsible for verifying its authenticity.

\*\*\*\*\* End of Report \*\*\*\*\*



Ningbo LCS Standard Technology Service Co., Ltd.

Add: 101-106, 202-206, Building 037, No. 166, Jinghua Road, Meixu Street, Ningbo High-tech Zone, Yinzhou District, Ningbo City, Zhejiang Province, China

Tel: +(86) 0574-8790 8011 | E-mail: webmaster@lcs-cert.com | http:// www.lcs-cert.com