



ROHS Test Report

Applicant : Shenzhen Hengmeite Technology Co., Ltd.

Applicant Address : 2nd Floor, Building 14, Zone C, Fangxing Science Park, Nanlian Sixth Industrial Zone, Longgang District, Shenzhen City, Guangdong P.R. China

Sample Description : QD-H07 Humidifier

Trademark : N/A

Model Number : QD-H07

Manufacturer : Shenzhen Hengmeite Technology Co., Ltd.

Manufacturer Address : 2nd Floor, Building 14, Zone C, Fangxing Science Park, Nanlian Sixth Industrial Zone, Longgang District, Shenzhen City, Guangdong P.R. China

Test Standard : IEC62321-1:2013, IEC62321-2:2013, IEC62321-3-1:2013, IEC62321- 5:2013, IEC62321-4:2013+A1:2017, IEC62321-7-1:2015, IEC62321-7-2:2017, IEC62321-6:2015, IEC62321-8-2017

Comment : Based on the performed tests on submitted samples, the results of Pb, Cd, Hg, Cr(VI), PBBs, PBDEs, DBP, BBP, DEHP, DIBP comply with the limits as set by EU RoHS Directive 2011/65/EU and its amendment Directive 2015/863/EU.

Issue Date : Nov. 10, 2021

Report No. : BYS211108441HR



Approved by:

Date:

Nov. 10, 2021

This test report is based on a single evaluation of one sample of above mentioned products. It is not permitted to be duplicated in extracts without written approval of ShenZhen BYS testing co.Ltd.



Test Method:

Tested Item(s)	Test Method	Measured Equipment(s)	MDL Unit (mg/kg)
Lead(Pb)	IEC 62321-5:2013 Ed.1.0	ICP-OES	2
Cadmium(Cd)	IEC 62321-5:2013 Ed.1.0	ICP-OES	2
Mercury(Hg)	IEC 62321-4:2013 Ed.1.0	ICP-OES	2
Hexavalent Chromium(Cr(VI))	IEC 62321-7-2:2017 Ed.1.0	UV-Vis	8
Polybrominated Biphenyls (PBBs)	IEC 62321-6:2015 Ed.1.0	GC-MS	5
Polybrominated Diphenyl Ethers (PBDEs)	IEC 62321-6:2015 Ed.1.0	GC-MS	5
Phthalates	IEC 62321-8:2017 Ed.1.0	GC-MS	50

Test Items	Test Method/ Equipment	MDL	Content	EU RoHS Directive 2011/65/EU and its amendment Directive EU 2015/863
Mono-bromobiphenyl	REFER TO IEC 62321-6:2015. GC-MS	5	N.D.	---
Di-bromobiphenyl		5	N.D.	
Tri-bromobiphenyl		5	N.D.	
Tetra-bromobiphenyl		5	N.D.	
Penta-bromobiphenyl		5	N.D.	
Hexa-bromobiphenyl		5	N.D.	
Hepta-bromobiphenyl		5	N.D.	
Octa-bromobiphenyl		5	N.D.	
Nona-bromobiphenyl		5	N.D.	
Deca-bromobiphenyl		5	N.D.	
Polybrominated Biphenyls(PBBs)			---	
Mono-bromodiphenyl ether	REFER TO IEC 62321-6:2015. GC-MS	5	N.D.	--
Di-bromodiphenyl ether		5	N.D.	
Tri-bromodiphenyl ether		5	N.D.	
Tetra-bromodiphenyl ether		5	N.D.	
Penta-bromodiphenyl ether		5	N.D.	
Hexa-bromodiphenyl ether		5	N.D.	
Hepta-bromodiphenyl ether		5	N.D.	



Test Items	Test Method/ Equipment	MDL	Content	EU RoHS Directive 2011/65/EU and its amendment Directive EU 2015/863
Octa-bromodiphenyl ether		5	N.D.	
Nona-bromodiphenyl ether		5	N.D.	
Deca-bromodiphenyl ether		5	N.D.	
Polybrominated Diphenyl Ethers(PBDEs)		---	N.D.	1000
Dibutyl phthalate (DBP)	REFER TO BS EN 14372:2004, GC-MS	30	N.D.	1000
Butylbenzyl phthalate (BBP)		30	N.D.	1000
Di-(2-ethylhexyl) Phthalate (DEHP)		30	N.D.	1000
Di-iso-butyl phthalate (DIBP)		30	N.D.	1000



Tested Sample/Part Description:

1. Black plastic
2. White plastic
3. black line
4. Black plastic
5. PCB
6. Lamp bead
7. White plastic
8. PCB
9. Argentine
10. white line
11. White plastic
12. transparent plastic
13. Black plastic
14. White plastic
15. The white rubber
16. Black plastic

Test Results

Test Items	Result Unit (mg/kg)						Acceptable Limit Unit (mg/kg)
	1	2	3	4	5	6	
Lead (Pb)	N.D.	N.D.	N.D.	N.D.	N.D.	N.D.	1000
Cadmium (Cd)	N.D.	N.D.	N.D.	N.D.	N.D.	N.D.	100
Mercury (Hg)	N.D.	N.D.	N.D.	N.D.	N.D.	N.D.	1000
Hexavalent Chromium (Cr(VI))	N.D.	N.D.	N.D.	N.D.	N.D.	N.D.	1000
Polybrominated Biphenyls(PBBs)	N.D.	N.D.	N.D.	N.D.	N.D.	N.D.	1000
Monobromobiphenyl	N.D.	N.D.	N.D.	N.D.	N.D.	N.D.	--
Dibromobiphenyl	N.D.	N.D.	N.D.	N.D.	N.D.	N.D.	--



Tribromobiphenyl	N.D.	N.D.	N.D.	N.D.	N.D.	N.D.	--
Tetrabromobiphenyl	N.D.	N.D.	N.D.	N.D.	N.D.	N.D.	--
Pentabromobiphenyl	N.D.	N.D.	N.D.	N.D.	N.D.	N.D.	--
Hexabromobiphenyl	N.D.	N.D.	N.D.	N.D.	N.D.	N.D.	--
Heptabromobiphenyl	N.D.	N.D.	N.D.	N.D.	N.D.	N.D.	--
Octabromobiphenyl	N.D.	N.D.	N.D.	N.D.	N.D.	N.D.	--
Nonabromobiphenyl	N.D.	N.D.	N.D.	N.D.	N.D.	N.D.	--
Decabromobiphenyl	N.D.	N.D.	N.D.	N.D.	N.D.	N.D.	--
Polybrominated Diphenyl Ethers(PBDEs)	N.D.	N.D.	N.D.	N.D.	N.D.	N.D.	1000
Monobromodiphenyl ether	N.D.	N.D.	N.D.	N.D.	N.D.	N.D.	--
Dibromodiphenyl ether	N.D.	N.D.	N.D.	N.D.	N.D.	N.D.	--
Tribromodiphenyl ether	N.D.	N.D.	N.D.	N.D.	N.D.	N.D.	--
Tetrabromodiphenyl ether	N.D.	N.D.	N.D.	N.D.	N.D.	N.D.	--
Pentabromodiphenyl ether	N.D.	N.D.	N.D.	N.D.	N.D.	N.D.	--
Hexabromodiphenyl ether	N.D.	N.D.	N.D.	N.D.	N.D.	N.D.	--
Heptabromodiphenyl ether	N.D.	N.D.	N.D.	N.D.	N.D.	N.D.	--
Octabromodiphenyl ether	N.D.	N.D.	N.D.	N.D.	N.D.	N.D.	--
Nonabromodiphenyl ether	N.D.	N.D.	N.D.	N.D.	N.D.	N.D.	--
Decabromodiphenyl ether	N.D.	N.D.	N.D.	N.D.	N.D.	N.D.	--

Test Items	Result Unit (mg/kg)						Acceptable Limit Unit (mg/kg)
	7	8	9	10	11	12	
Lead (Pb)	N.D.	N.D.	N.D.	N.D.	N.D.	N.D.	1000
Cadmium (Cd)	N.D.	N.D.	N.D.	N.D.	N.D.	N.D.	100
Mercury (Hg)	N.D.	N.D.	N.D.	N.D.	N.D.	N.D.	1000



Hexavalent Chromium (Cr(VI))	N.D.	N.D.	N.D.	N.D.	N.D.	N.D.	1000
Polybrominated Biphenyls(PBBs)	N.D.	N.D.	N.D.	N.D.	N.D.	N.D.	1000
Monobromobiphenyl	N.D.	N.D.	N.D.	N.D.	N.D.	N.D.	--
Dibromobiphenyl	N.D.	N.D.	N.D.	N.D.	N.D.	N.D.	--
Tribromobiphenyl	N.D.	N.D.	N.D.	N.D.	N.D.	N.D.	--
Tetrabromobiphenyl	N.D.	N.D.	N.D.	N.D.	N.D.	N.D.	--
Pentabromobiphenyl	N.D.	N.D.	N.D.	N.D.	N.D.	N.D.	--
Hexabromobiphenyl	N.D.	N.D.	N.D.	N.D.	N.D.	N.D.	--
Heptabromobiphenyl	N.D.	N.D.	N.D.	N.D.	N.D.	N.D.	--
Octabromobiphenyl	N.D.	N.D.	N.D.	N.D.	N.D.	N.D.	--
Nonabromobiphenyl	N.D.	N.D.	N.D.	N.D.	N.D.	N.D.	--
Decabromobiphenyl	N.D.	N.D.	N.D.	N.D.	N.D.	N.D.	--
Polybrominated Diphenyl Ethers(PBDEs)	N.D.	N.D.	N.D.	N.D.	N.D.	N.D.	1000
Monobromodiphenyl ether	N.D.	N.D.	N.D.	N.D.	N.D.	N.D.	--
Dibromodiphenyl ether	N.D.	N.D.	N.D.	N.D.	N.D.	N.D.	--
Tribromodiphenyl ether	N.D.	N.D.	N.D.	N.D.	N.D.	N.D.	--
Tetrabromodiphenyl ether	N.D.	N.D.	N.D.	N.D.	N.D.	N.D.	--
Pentabromodiphenyl ether	N.D.	N.D.	N.D.	N.D.	N.D.	N.D.	--
Hexabromodiphenyl ether	N.D.	N.D.	N.D.	N.D.	N.D.	N.D.	--
Heptabromodiphenyl ether	N.D.	N.D.	N.D.	N.D.	N.D.	N.D.	--
Octabromodiphenyl ether	N.D.	N.D.	N.D.	N.D.	N.D.	N.D.	--
Nonabromodiphenyl ether	N.D.	N.D.	N.D.	N.D.	N.D.	N.D.	--
Decabromodiphenyl ether	N.D.	N.D.	N.D.	N.D.	N.D.	N.D.	--



Test Items	Result Unit (mg/kg)						Acceptable Limit Unit (mg/kg)
	13	14	15	16			
Lead (Pb)	N.D.	N.D.	N.D.	N.D.			1000
Cadmium (Cd)	N.D.	N.D.	N.D.	N.D.			100
Mercury (Hg)	N.D.	N.D.	N.D.	N.D.			1000
Hexavalent Chromium (Cr(VI))	N.D.	N.D.	N.D.	N.D.			1000
Polybrominated Biphenyls(PBBs)	N.D.	N.D.	N.D.	N.D.			1000
Monobromobiphenyl	N.D.	N.D.	N.D.	N.D.			--
Dibromobiphenyl	N.D.	N.D.	N.D.	N.D.			--
Tribromobiphenyl	N.D.	N.D.	N.D.	N.D.			--
Tetrabromobiphenyl	N.D.	N.D.	N.D.	N.D.			--
Pentabromobiphenyl	N.D.	N.D.	N.D.	N.D.			--
Hexabromobiphenyl	N.D.	N.D.	N.D.	N.D.			--
Heptabromobiphenyl	N.D.	N.D.	N.D.	N.D.			--
Octabromobiphenyl	N.D.	N.D.	N.D.	N.D.			--
Nonabromobiphenyl	N.D.	N.D.	N.D.	N.D.			--
Decabromobiphenyl	N.D.	N.D.	N.D.	N.D.			--
Polybrominated Diphenyl Ethers(PBDEs)	N.D.	N.D.	N.D.	N.D.			1000
Monobromodiphenyl ether	N.D.	N.D.	N.D.	N.D.			--
Dibromodiphenyl ether	N.D.	N.D.	N.D.	N.D.			--
Tribromodiphenyl ether	N.D.	N.D.	N.D.	N.D.			--
Tetrabromodiphenyl ether	N.D.	N.D.	N.D.	N.D.			--
Pentabromodiphenyl ether	N.D.	N.D.	N.D.	N.D.			--
Hexabromodiphenyl ether	N.D.	N.D.	N.D.	N.D.			--



Heptabromodiphenyl ether	N.D.	N.D.	N.D.	N.D.			--
Octabromodiphenyl ether	N.D.	N.D.	N.D.	N.D.			--
Nonabromodiphenyl ether	N.D.	N.D.	N.D.	N.D.			--
Decabromodiphenyl ether	N.D.	N.D.	N.D.	N.D.			--



Tribromodiphenyl ether	N.D.	N.D.	N.D.	N.D.	/	/	--
Tetrabromodiphenyl ether	N.D.	N.D.	N.D.	N.D.	/	/	--
Pentabromodiphenyl ether	N.D.	N.D.	N.D.	N.D.	/	/	--
Hexabromodiphenyl ether	N.D.	N.D.	N.D.	N.D.	/	/	--
Heptabromodiphenyl ether	N.D.	N.D.	N.D.	N.D.	/	/	--
Octabromodiphenyl ether	N.D.	N.D.	N.D.	N.D.	/	/	--
Nonabromodiphenyl ether	N.D.	N.D.	N.D.	N.D.	/	/	--
Decabromodiphenyl ether	N.D.	N.D.	N.D.	N.D.	/	/	--

Test Items	Result Unit (mg/kg)						Acceptable Limit Unit (mg/kg)
	1	2	3	4	5	6	
Di-isobutyl phthalate(DIBP) CAS #:84-69-5	N.D.	N.D.	N.D.	N.D.	N.D.	N.D.	1000
Dibutyl phthalate(DBP) CAS #:84-74-2	N.D.	N.D.	N.D.	N.D.	N.D.	N.D.	1000
Benzylbutyl phthalate(BBP) CAS #:85-68-7	N.D.	N.D.	N.D.	N.D.	N.D.	N.D.	1000
Di-2-ethylhexyl phthalate(DEHP) CAS #:117-81-7	N.D.	N.D.	N.D.	N.D.	N.D.	N.D.	1000

Test Items	Result Unit (mg/kg)						Acceptable Limit Unit (mg/kg)
	7	8	9	10	11	12	
Di-isobutyl phthalate(DIBP) CAS #:84-69-5	N.D.	N.D.	N.D.	N.D.	N.D.	N.D.	1000
Dibutyl phthalate(DBP) CAS #:84-74-2	N.D.	N.D.	N.D.	N.D.	N.D.	N.D.	1000
Benzylbutyl phthalate(BBP) CAS #:85-68-7	N.D.	N.D.	N.D.	N.D.	N.D.	N.D.	1000
Di-2-ethylhexyl phthalate(DEHP) CAS #:117-81-7	N.D.	N.D.	N.D.	N.D.	N.D.	N.D.	1000



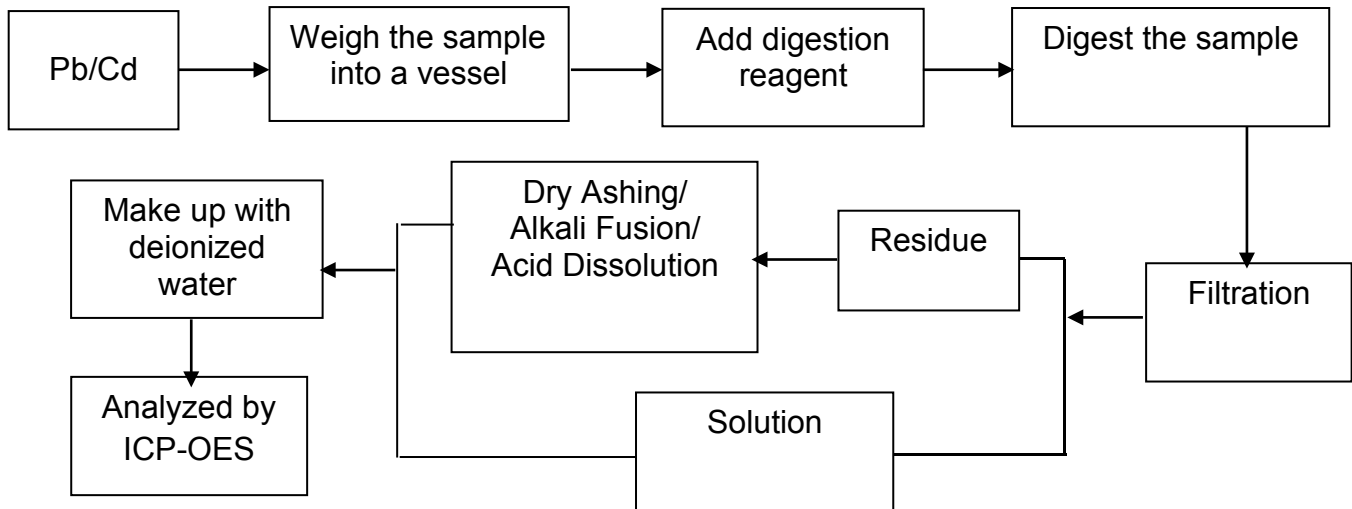
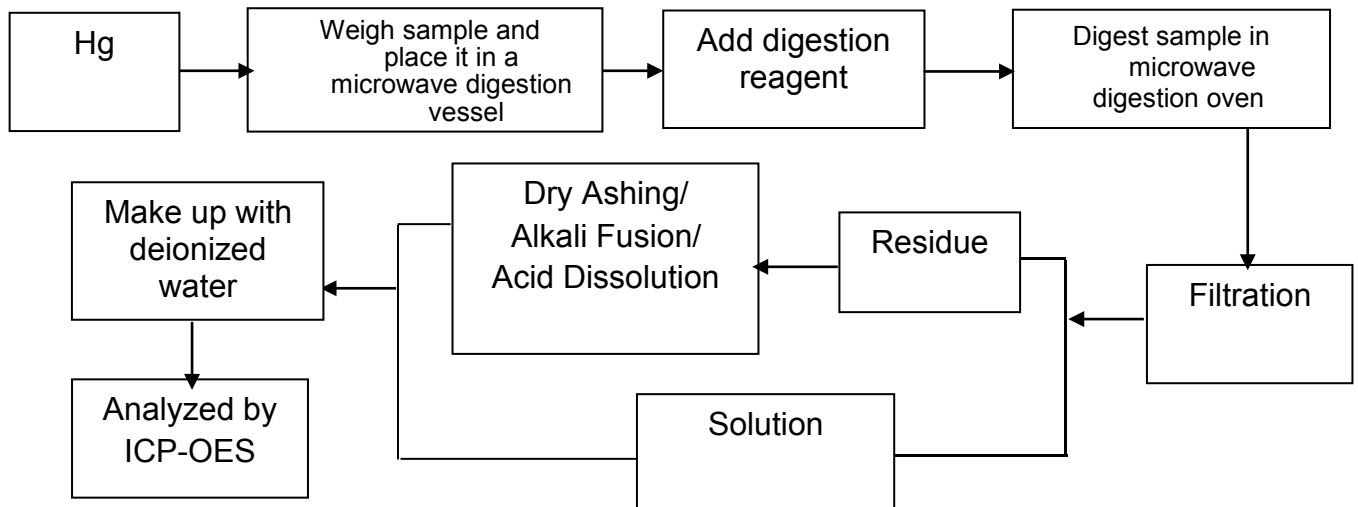
Test Items	Result Unit (mg/kg)						Acceptable Limit Unit (mg/kg)
	13	14	15	16			
Di-isobutyl phthalate(DIBP) CAS #:84-69-5	N.D.	N.D.	N.D.	N.D.			1000
Dibutyl phthalate(DBP) CAS #:84-74-2	N.D.	N.D.	N.D.	N.D.			1000
Benzylbutyl phthalate(BBP) CAS #:85-68-7	N.D.	N.D.	N.D.	N.D.			1000
Di-2-ethylhexyl phthalate(DEHP) CAS #:117-81-7	N.D.	N.D.	N.D.	N.D.			1000

NOTE:

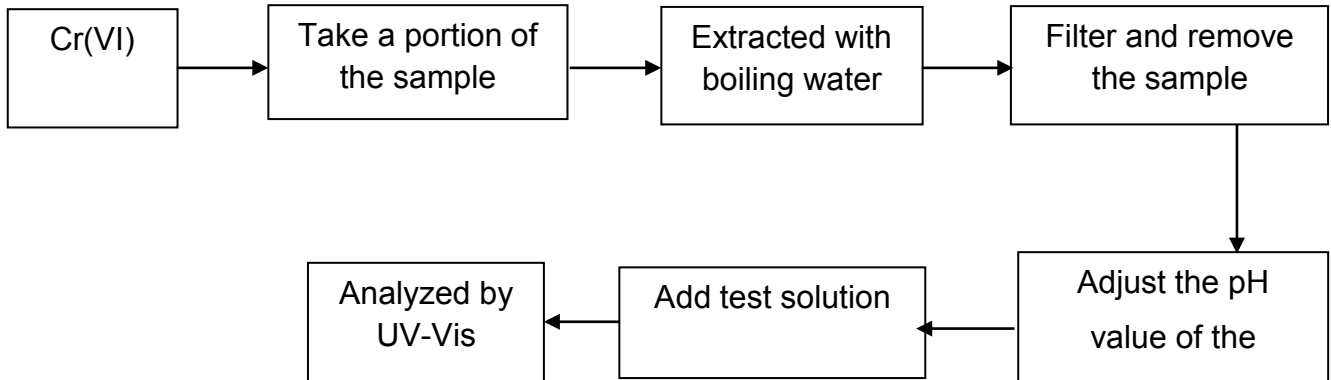
- (1) mg/kg = ppm=parts per million
- (2) N.D. = not detected (<MDL)
- (3) MDL=Method Detection Limit
- (4) “—” =Not regulated

Test Process:

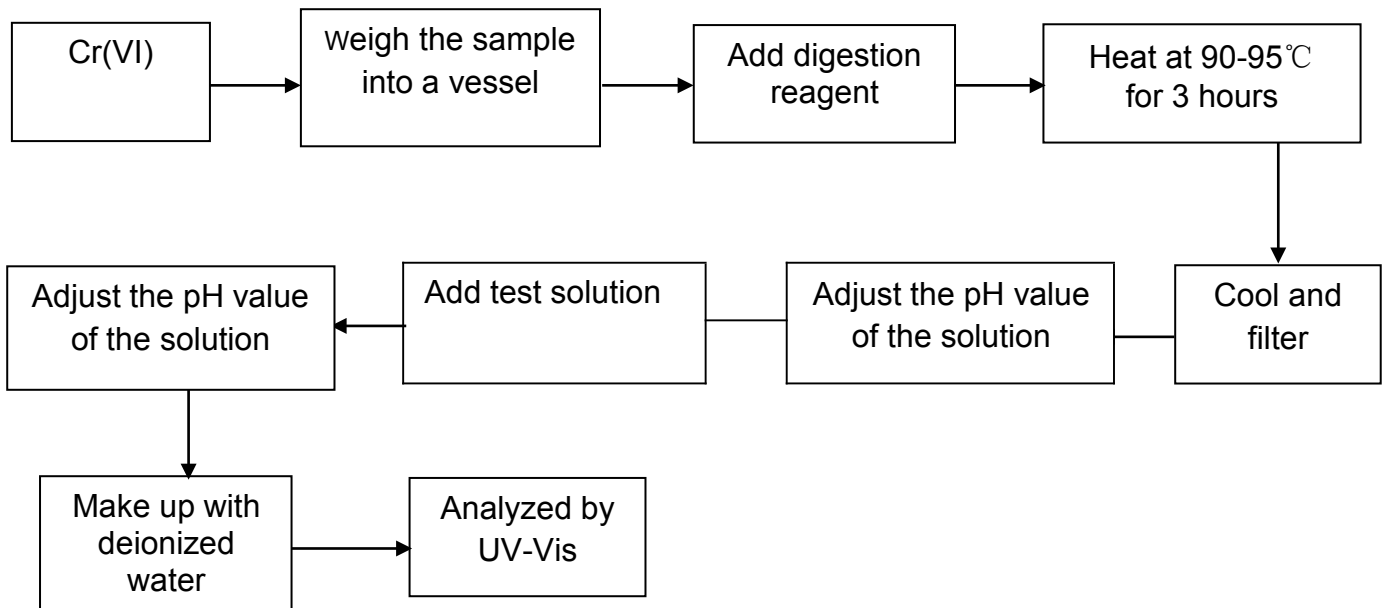
The sample(s) had been dissolved totally tested for Lead, Cadmium, Mercury.

◆ IEC 62321-5:2013 Ed.1.0**◆ IEC 62321-4:2013 Ed.1.0**

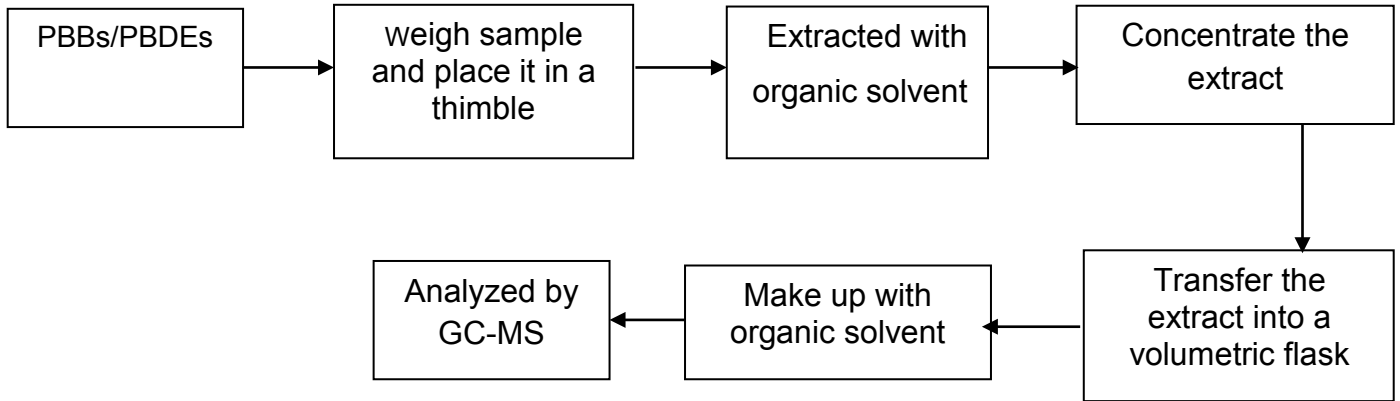
◆ IEC 62321-7-1:2015 Ed.1.0



◆ IEC 62321-7-2:2017 Ed.1.0



◆ IEC 62321-6:2015 Ed.1.0



PHOTOGRAPHS OF SAMPLE AS RECEIVED

Photo 1

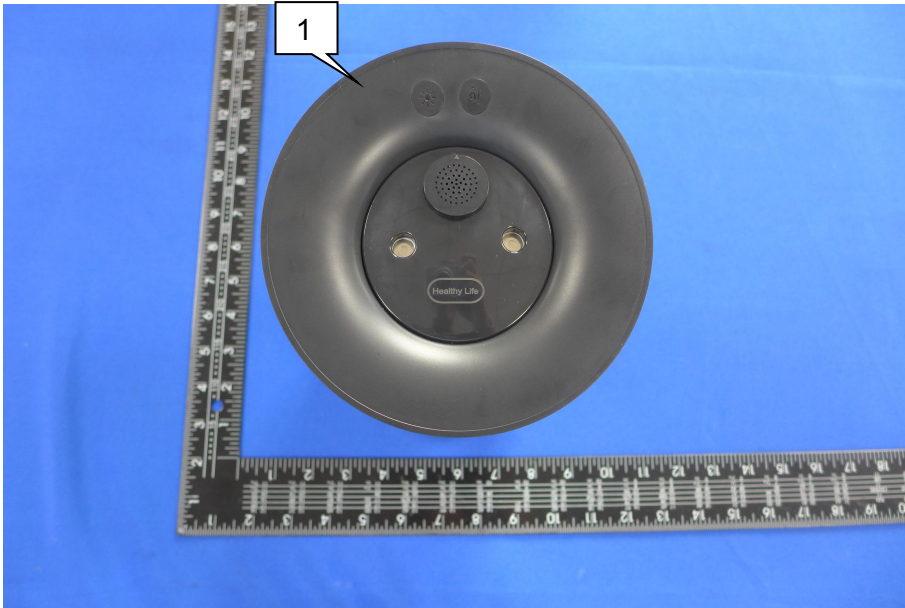


Photo 2

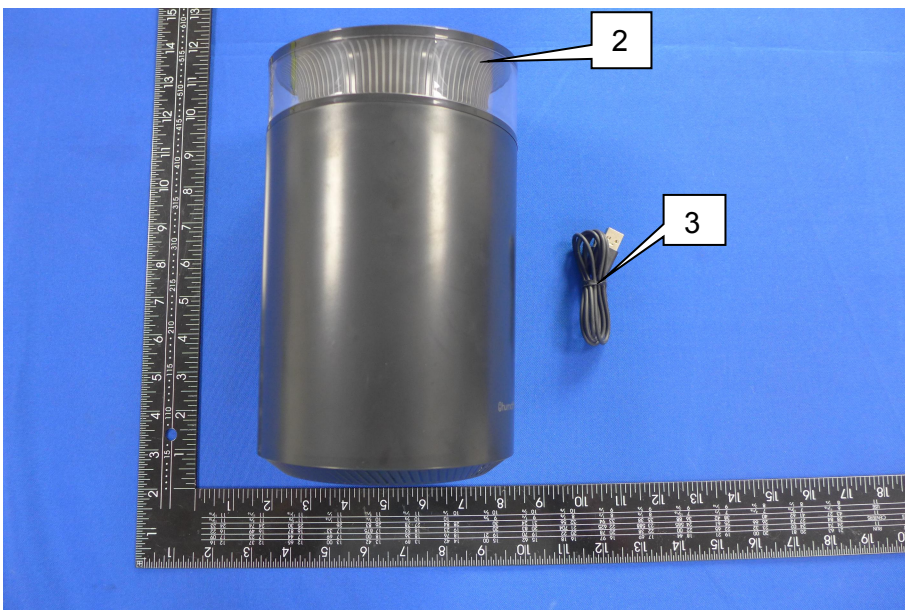


Photo 3



Photo 4

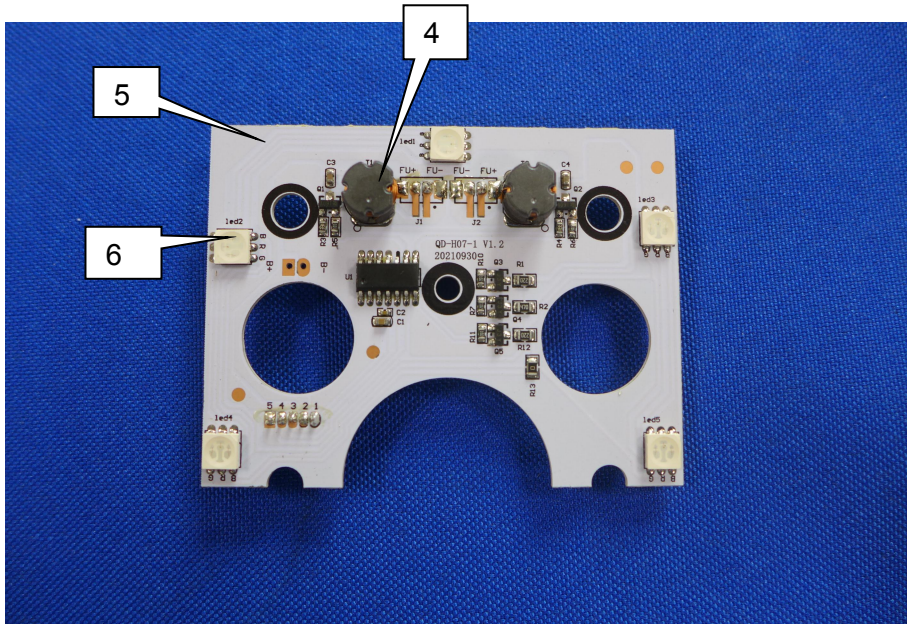


Photo 5

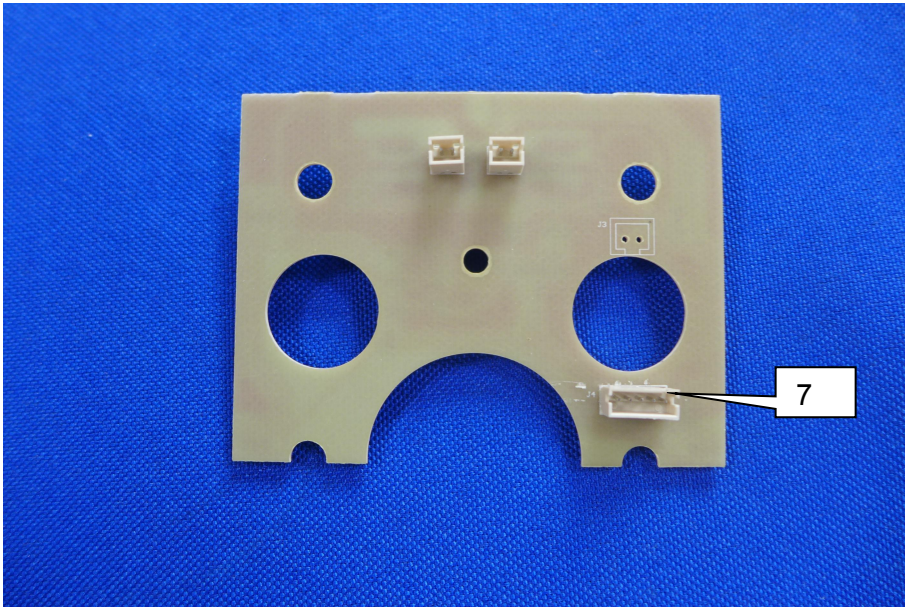


Photo 6

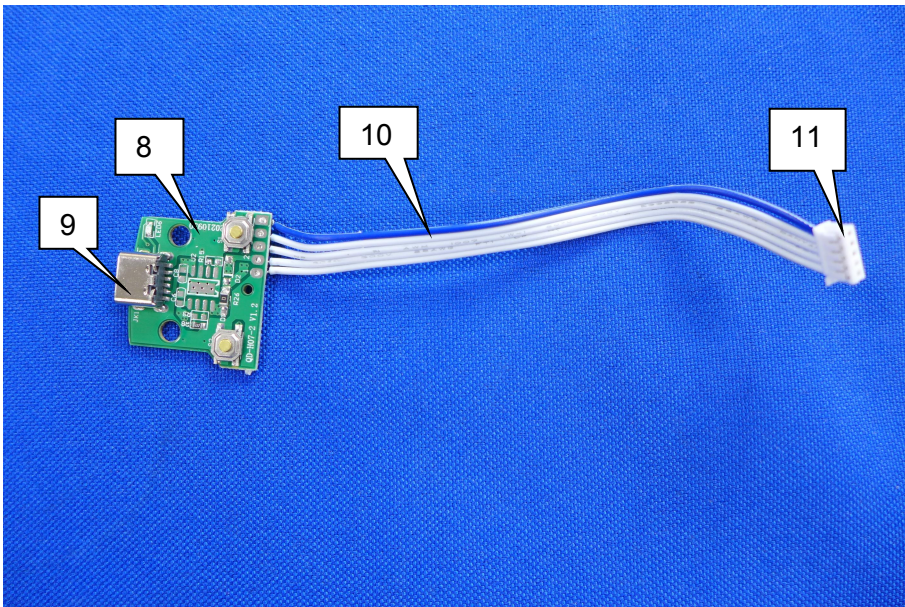
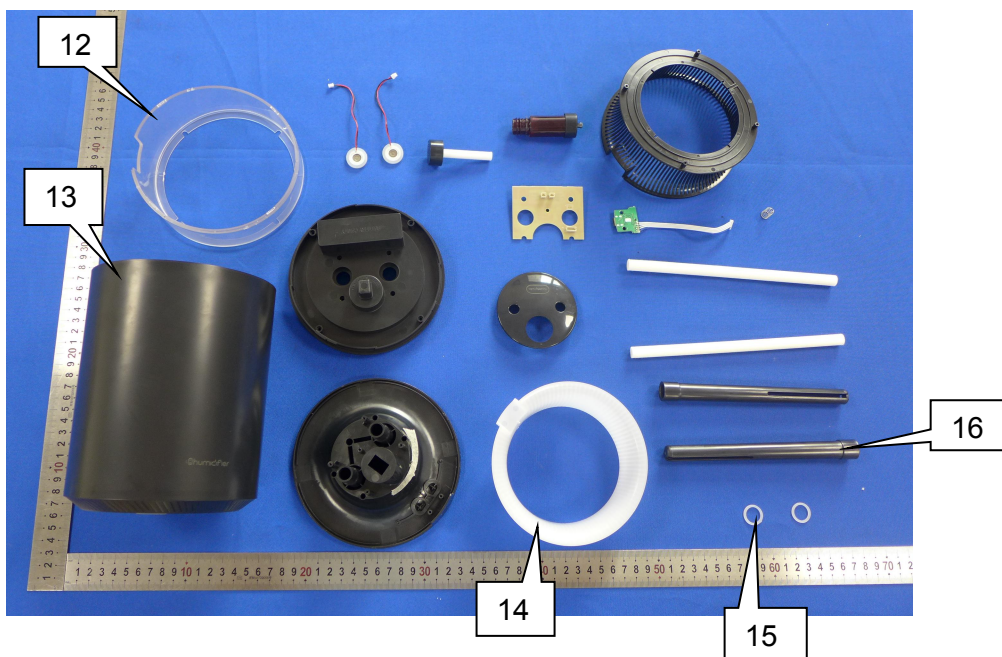


Photo 7



※※※※※ END OF REPORT ※※※※※